

## Safer Communities Partnership Board 19<sup>th</sup> July 2013 (Quarter 1)

Priority 1. Property crime with special focus on burglary

Priority 2. Anti-social behaviour

Priority 3. Violent crime with a specific focus on domestic violence

Priority 4. Barnet Integrated Offender Management Unit

Priority 5. Broader cost - effective intervention

Priority 6. Focus on places where offences take place

Priority 7. Tackle repeat victimisation

Priority 8. Building reassurance and confidence

Author Richard Bell Crime and Disorder Information Manager Adults and Communities Directorate

### **Residential Burglary falling**

Over the last 12 months there has been 3.8% fewer residential burglaries compared to the previous year. During the last three months burglary has fallen even further (25% reduction April to 26 June), and around 50% reduction in each of the last 4 weeks compared to those weeks last year. This has been achieved by a number of arrests being made in relation to of Barnet's burglary nominal targets. **Barnet has the 4th largest volume reduction in burglary in London in this period**

### **Non-residential burglary up**

There were significant spikes between March to late May, resulting in a **14.4% increase** FYTD up to 23 June. Barnet has the 6th largest volume increase in non-residential burglary in London in this period. However, during June non-res burglary decreased and three of the most recent four weeks had fewer burglaries than last year – it remains to be seen if the increase is short term or sustainable. The non res burglary is mainly concentrated in the town centres (especially Hendon and North Finchley) overnight.

### **Fewer robbery victims**

There has been a 32.3% decrease in robbery between April to 23 June, this means **83 fewer victims of robbery** on Barnet Borough than last year. 11th largest volume reduction in robbery in London.  
4th highest Sanctioned detection rate in London

### **Increase in rate of reported DV**

There has been a 23.6% increase in Domestic Violence with Injury reports between April to 26 June 2013 (overall total violence with injury has increased by 5.1%)

### **ASB – High volume, low rate per 1000 population**

Barnet has the 12th highest number of ASB calls in London, but taking into account the size of the population, Barnet has the 10<sup>th</sup> lowest rate of ASB calls per 1000 population out of London's 32 boroughs.

## Barnet's Headline Performance Quarter 1 2013

Headline Performance	Target reduction %	Actual reduction / increase %
Reduction of Total Crime (TNO)		-4.7%
Reduction of Burglary	- 6.5%	-1.9%
Reduction of Robbery	- 5%	-11.4%
Violent Crime (Domestic Violence)	- 5.2% (in relation to violence with injury)	+ 23.6%
Reduction of ASB repeat callers	- 10%	-10%

# Headline Barnet's Crime Performance Qrt 1 2013

MOPAC Crime		Offences			Headline		Target reduction		Actual reduction/increase			
		FY 11/12^	Current R12	% Chg								
<b>MOPAC 7</b>		<b>15,261</b>	<b>13,408</b>	<b>-12.1 %</b>								
Burglary		4,912	4,670	-4.9 %								
Criminal Damage		2,361	1,933	-18.1 %								
Robbery		1,199	996	-16.9 %								
Theft From MV		3,602	2,956	-17.9 %								
Theft/Taking Of MV		956	672	-29.7 %								
Theft From Person		692	731	+5.6 %								
Violence With Injury		1,539	1,450	-5.8 %								
<b>Increase Confidence</b>		<b>Target</b>	<b>Q4 11</b>	<b>Q4 12</b>	<b>% Chg</b>							
Police in my local area do a good or excellent job		66%	66%	68%	+2.0% pt							
<b>Reduce Cost</b>												
Delivery of the agreed 2013/14 Budget												
Crime Type		Offences			Weekly Excppts	Trends	SD Rate			Primary SD Rate		
		Target	Previous R12	Current R12	% Chg			Target	Previous R12	Current R12	Previous R12	Current R12
<b>TNO</b>			<b>25,814</b>	<b>24,590</b>	<b>-4.7 %</b>	■	◆		<b>16.5%</b>	<b>18.7%</b>	<b>15.0%</b>	<b>16.2%</b>
<b>Burglary</b>		-6.5%	<b>4,760</b>	<b>4,670</b>	<b>-1.9 %</b>	↓	◆	<b>18%</b>	<b>7.8%</b>	<b>12.6%</b>	<b>4.0%</b>	<b>4.9%</b>
Burglary In a Dwelling			3,382	3,254	-3.8 %	↓	◆		8.5%	14.4%	4.0%	4.7%
Burglary In Other Buildings			1,378	1,416	+2.8 %	■	◆		6.0%	8.6%	4.1%	5.4%
<b>Criminal Damage</b>		-1.5%	<b>2,205</b>	<b>1,933</b>	<b>-12.3 %</b>	■	◆	<b>15%</b>	<b>10.4%</b>	<b>14.4%</b>	<b>10.4%</b>	<b>14.4%</b>
<b>Robbery</b>		-5.0%	<b>1,124</b>	<b>996</b>	<b>-11.4 %</b>	■	↑	<b>18%</b>	<b>14.8%</b>	<b>18.4%</b>	<b>11.8%</b>	<b>15.4%</b>
Personal Robbery			1,040	915	-12.0 %	■	↑		14.2%	18.0%	11.4%	14.9%
Business Robbery			84	81	-3.6 %	■	◆		21.4%	22.2%	16.7%	21.0%
Robbery of mobile phone*			500	404	-19.2 %	■	◆	20%	14.4%	21.5%	-	-
<b>Theft Of/From MV</b>			<b>4,432</b>	<b>3,628</b>	<b>-18.1 %</b>	■	◆	<b>10%</b>	<b>5.5%</b>	<b>7.6%</b>	<b>1.8%</b>	<b>2.0%</b>
Theft From MV		-5.0%	3,534	2,956	-16.4 %	■	◆		5.7%	7.8%	1.2%	0.9%
Theft/Taking Of MV		0.0%	898	672	-25.2 %	■	◆		4.6%	6.7%	4.5%	6.4%
<b>Theft From Person</b>		-9.0%	<b>709</b>	<b>731</b>	<b>+3.1 %</b>	■	◆	<b>5%</b>	<b>3.5%</b>	<b>2.6%</b>	<b>3.1%</b>	<b>2.6%</b>
Theft of mobile phone*			405	407	+0.5 %	■	◆	5%	3.0%	2.0%	-	-
<b>Violence With Injury</b>		-5.2%	<b>1,481</b>	<b>1,450</b>	<b>-2.1 %</b>	■	◆	<b>40%</b>	<b>36.3%</b>	<b>34.6%</b>	<b>36.3%</b>	<b>34.6%</b>
Non-DV VWI			1,027	911	-11.3 %	■	◆		28.0%	23.8%	28.0%	23.8%
DV VWI			454	539	+18.7 %	■	◆	<b>55%</b>	<b>54.8%</b>	<b>52.9%</b>	<b>54.8%</b>	<b>52.9%</b>
<b>Domestic Violence</b>			<b>1,167</b>	<b>1,419</b>	<b>+21.6 %</b>	■	◆		<b>48.3%</b>	<b>48.0%</b>	<b>48.3%</b>	<b>48.0%</b>
CCC Despatch		Previous R12	Current R12	% Chg								
I Calls within 15 mins		84.3%	88.8%	+4.5% pt								
S Calls within 60 mins		85.9%	91.7%	+5.8% pt								
Satisfaction		Q4 11	Q4 12	% Chg								
<b>Overall Satisfaction</b>		<b>73.0%</b>	<b>78.0%</b>	<b>+5.0% pt</b>								
Burglary		80.0%	83.0%	+3.0% pt								
Motor Vehicle Crime		65.0%	78.0%	+13.0% pt								
Violent Crime		75.0%	74.0%	-1.0% pt								

**Key**

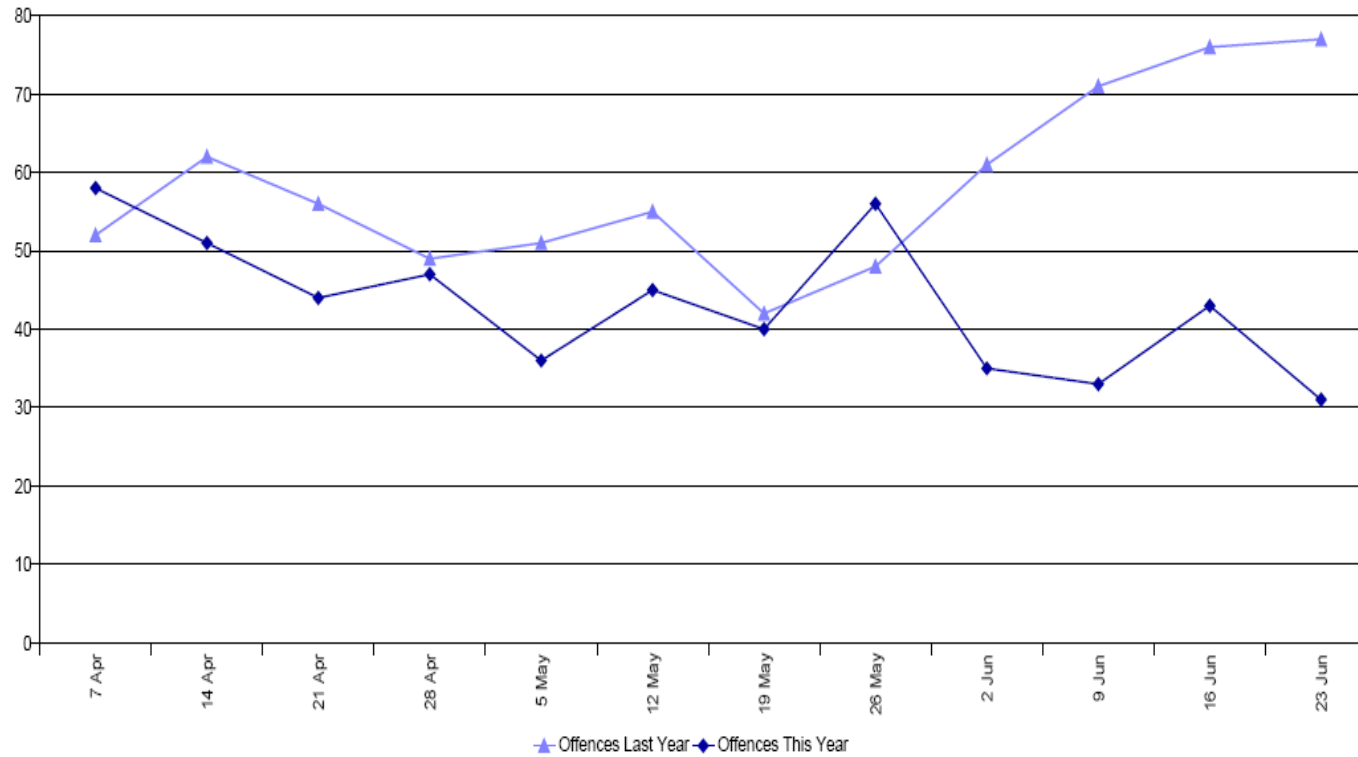
- Performance is at or above target
- Performance is below target but is at least half the improvement required to meet the target compared to the previous reporting period
- Performance is below target and less than half the improvement required to meet the target

**Green is improving performance**  
**Red is worsening performance**

# Priority 1 Property crime

with special focus on residential burglary

Weekly Residential Burglary Performance - Barnet



FYTD Totals are calculated from 1 April

Offences	14 Apr	21 Apr	28 Apr	5 May	12 May	19 May	26 May	2 Jun	9 Jun	16 Jun	23 Jun	FYTD Total
Last Year	62	56	49	51	55	42	48	61	71	76	77	<b>700</b>
This Year	51	44	47	36	45	40	56	35	33	43	31	<b>519</b>
% Change	-17.7%	-21.4%	-4.1%	-29.4%	-18.2%	-4.8%	16.7%	-42.6%	-53.5%	-43.4%	-59.7%	<b>-25.9%</b>

Year	Number of residential burglaries
2010/11	3362
2011/12	3397
2012/13	3386
Current FYTD (2013/14 up to 30/06/2013) and Percentage change vs. that period last year	519 ( 25.9% reduction %)

# Headline Comparative Burglary Residential Performance

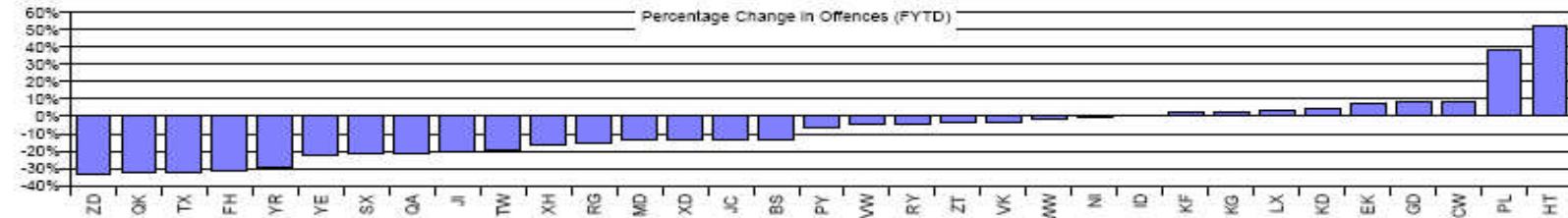
1<sup>st</sup> April – 19<sup>th</sup> June 2013



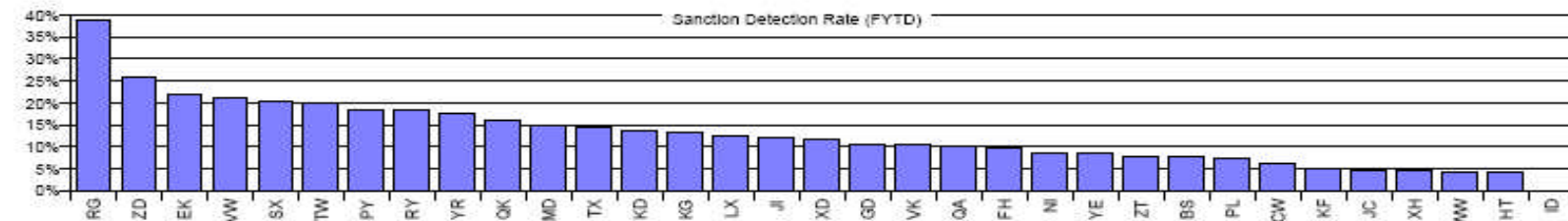
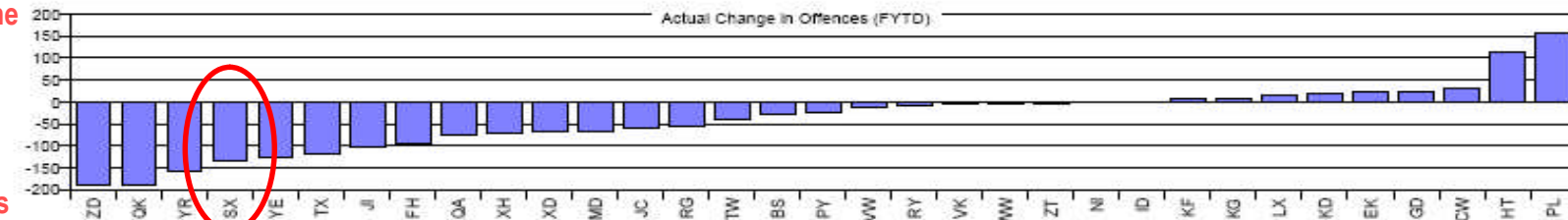
## Executive Summary

### MPS Headlines

**Offences** Decrease of 10.3% from 11934 to 10701  
**Sanction Detections** Increase of 1.6% from 1367 to 1389  
**Sanction Detection Rate** 13.0% compared with 11.5% for the same period last year



Barnet has the 4<sup>th</sup> largest volume reduction in burglary in London in this period



All figures relate to Residential Burglary and comparisons are with the same dates last year (1 April to 16 June)

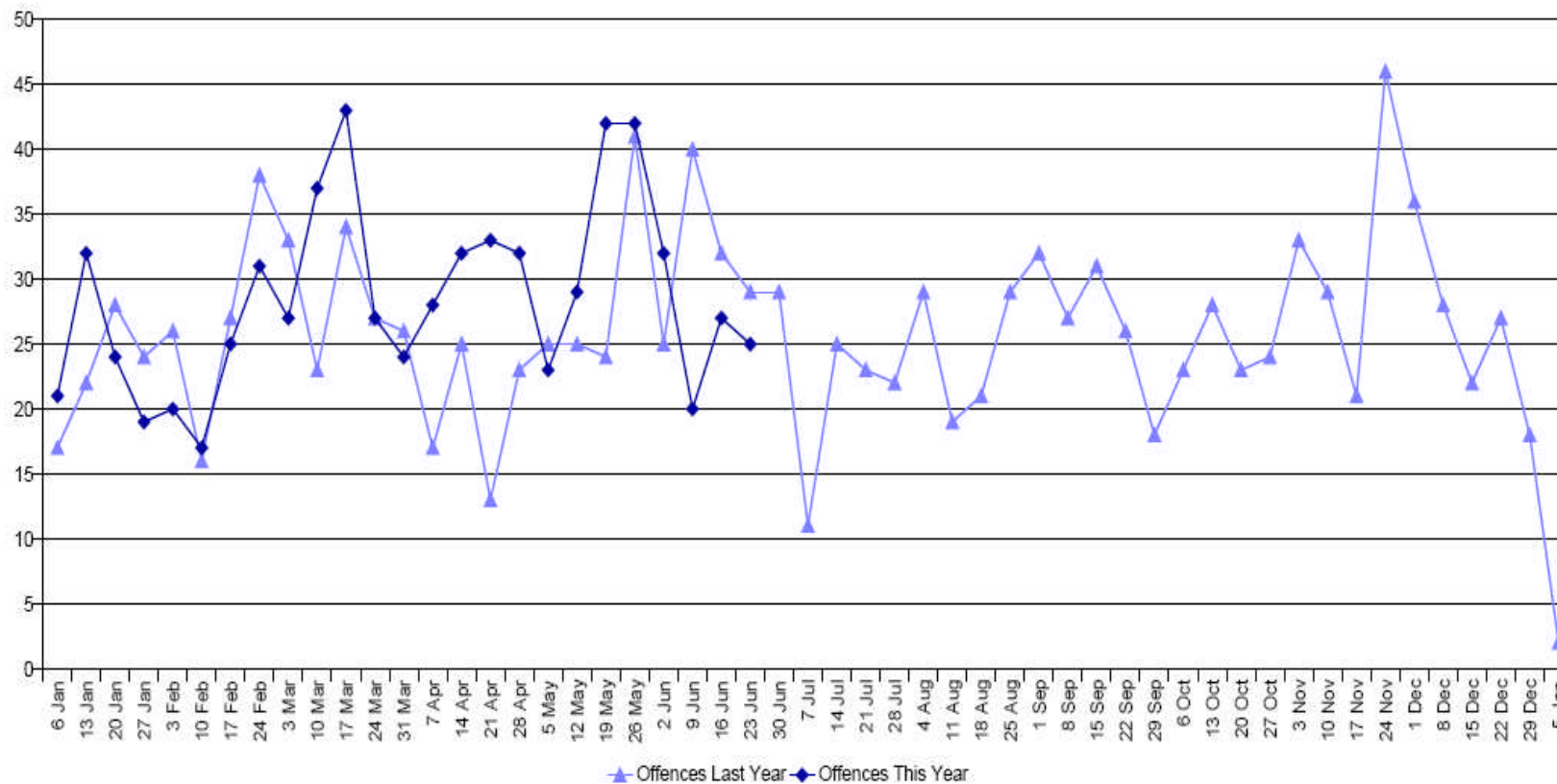
Data is subject to daily change  
 Last Refresh Date: 19/06/2013

Performance Helpdesk - 783131  
 If there are any queries with this report, please call the Helpdesk  
 PD077/1314/11/v1

19/06/2013 © MOPAC (2013)  
 Page 3

# Priority 1 Property crime with special focus on non res burglary

## Weekly Non-Residential Burglary Performance - Barnet



FYTD Totals are calculated from 1 April

Offences	14 Apr	21 Apr	28 Apr	5 May	12 May	19 May	26 May	2 Jun	9 Jun	16 Jun	23 Jun	FYTD Total
Last Year	25	13	23	25	25	24	41	25	40	32	29	319
This Year	32	33	32	23	29	42	42	32	20	27	25	365
% Change	28.0%	153.8%	39.1%	-8.0%	16.0%	75.0%	2.4%	28.0%	-50.0%	-15.6%	-13.8%	14.4%

# Headline Comparative Burglary Non Residential Performance 1st April – 26th June

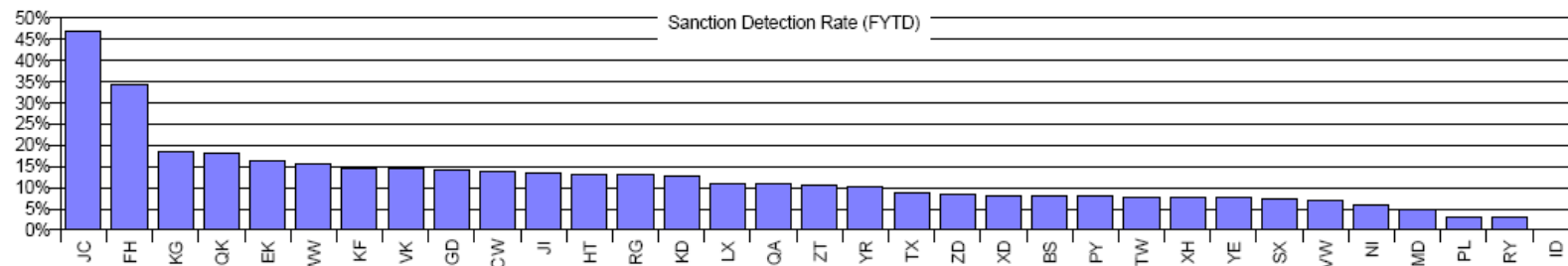
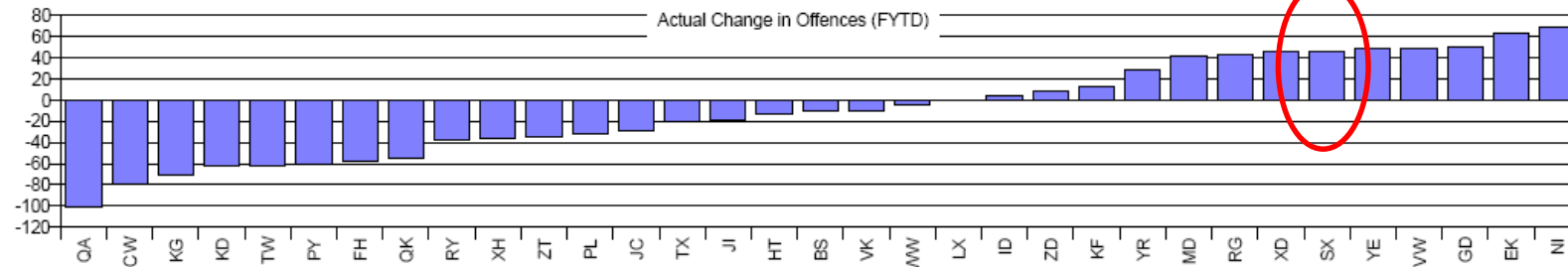
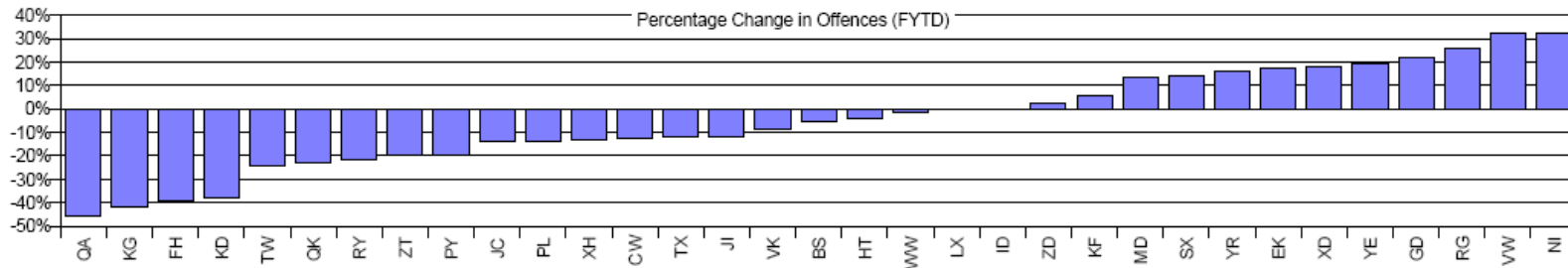
## Executive Summary

### MPS Headlines

**Offences** Decrease of 3.8% from 7755 to 7463

**Sanction Detections** Increase of 28.7% from 677 to 871

**Sanction Detection Rate** 11.7% compared with 8.7% for the same period last year

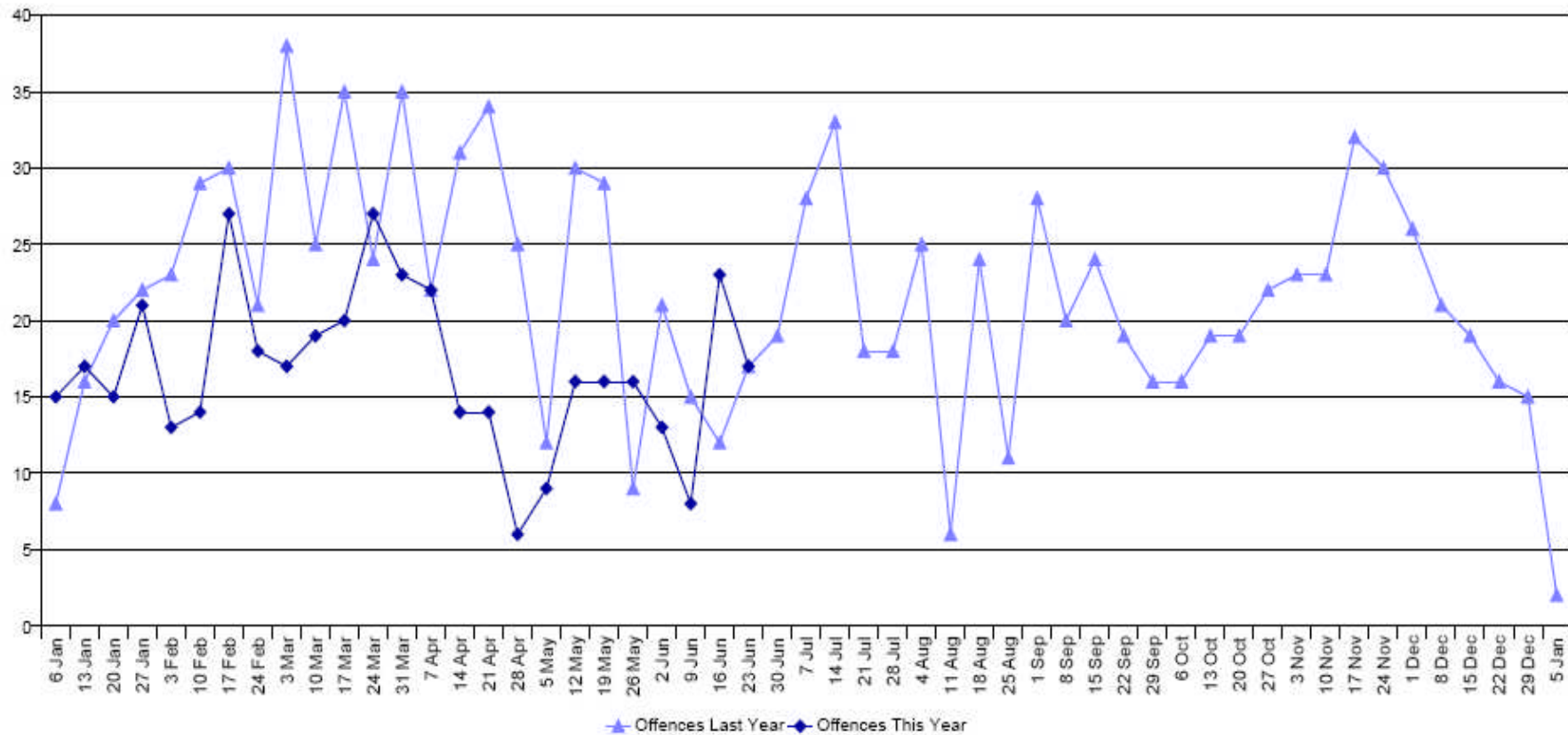


Barnet has the 6<sup>th</sup> largest volume increase in non-residential burglary in London in this period



# Priority 1 Property crime - Robbery

## Weekly Robbery Performance - Barnet



FYTD Totals are calculated from 1 April

Offences	14 Apr	21 Apr	28 Apr	5 May	12 May	19 May	26 May	2 Jun	9 Jun	16 Jun	23 Jun	FYTD Total
Last Year	31	34	25	12	30	29	9	21	15	12	17	257
This Year	14	14	6	9	16	16	16	13	8	23	17	174
% Change	-54.8%	-58.8%	-76.0%	-25.0%	-46.7%	-44.8%	77.8%	-38.1%	-46.7%	91.7%	0.0%	-32.3%

# Headline Comparative Robbery Performance 1st April – 26th June

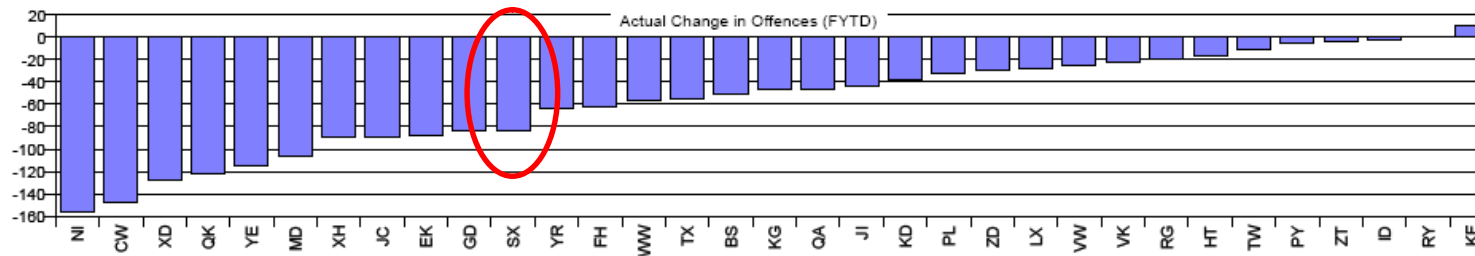
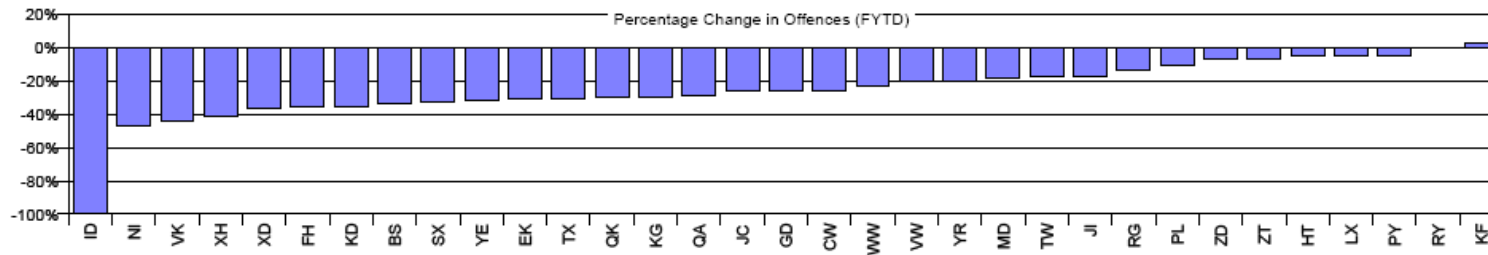
## Executive Summary

### MPS Headlines

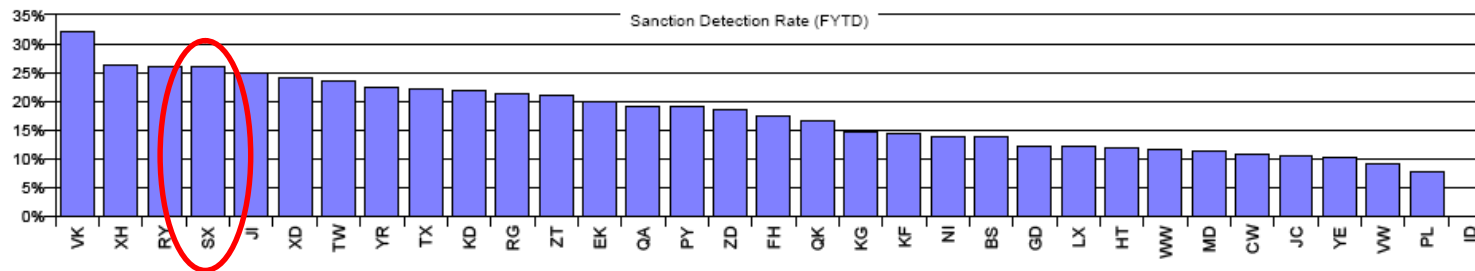
**Offences** Decrease of 21.8% from 8511 to 6654

**Sanction Detections** Decrease of 17.4% from 1261 to 1041

**Sanction Detection Rate** 15.6% compared with 14.8% for the same period last year



Barnet 11<sup>th</sup> largest volume reduction in robbery in London



Barnet 4<sup>th</sup> highest Sanctioned detection rate in London

## Priority 2 Anti-social behaviour

Target – percent very / somewhat worried about	Baseline 2010/11 (Public Attitude Survey)	Public Attitude Survey 12/13 (Q4)	Residents Survey 10/11	Residents Survey 12/13
ASB	24%	<b>25%</b>		
Teenagers hanging around on the streets	21%	<b>13%</b>	27%	<b>25%</b>
Rubbish / litter	21%	<b>15%</b>	30%	<b>34%</b>
Vandalism, graffiti and other deliberate damage	19%	<b>10%</b>	24%	<b>23%</b>
Drunk / rowdy in public place	9%	<b>7%</b>	19%	<b>19%</b>
Noisy neighbours or loud parties	10%	<b>7%</b>		
Local drug use / dealing	13%	<b>11%</b>		
Abandoned or burnt out cars	5%	<b>3%</b>		
Gangs	9%	<b>2%</b>		

## Priority 2 Anti-social behaviour

○  
Barnet has the 12<sup>th</sup> highest number of ASB calls in London, but per 1000 population this equates to the 10<sup>th</sup> lowest rate

OCU	Year to Date ASB Incidents	Year to Date ASB Incidents per 1000 population	Year to Date PAS - High Levels of ASB
Barking & Dagenham	632	3.40	26 %
Barnet	978	2.76	4 %
Bexley	565	2.45	6 %
Brent	1,001	3.22	12 %
Bromley	753	2.45	8 %
Camden	1,025	4.68	15 %
Croydon	1,262	3.48	7 %
Ealing	1,098	3.25	18 %
Enfield	1,002	3.21	14 %
Greenwich	863	3.40	13 %
Hackney	1,007	4.08	20 %
Hammersmith & Fulham	646	3.55	13 %
Haringey	874	3.43	14 %
Harrow	599	2.51	8 %
Havering	579	2.45	10 %
Hillingdon	887	3.24	19 %
Hounslow	853	3.36	20 %
Islington	949	4.62	18 %
Kensington & Chelsea	575	3.65	11 %
Kingston upon Thames	403	2.53	8 %
Lambeth	1,385	4.56	14 %
Lewisham	1,036	3.76	16 %
Merton	468	2.35	5 %
Newham	1,304	4.21	27 %
Redbridge	873	3.12	14 %
Richmond upon Thames	430	2.31	5 %
Southwark	1,110	3.86	14 %
Sutton	515	2.71	6 %
Tower Hamlets	1,603	6.27	29 %
Waltham Forest	946	3.66	13 %
Wandsworth	844	2.75	10 %
Westminster	1,567	7.17	13 %
<b>MPS</b>	<b>28,632</b>	<b>3.51</b>	<b>13 %</b>

# Priority 2 Anti-social behaviour

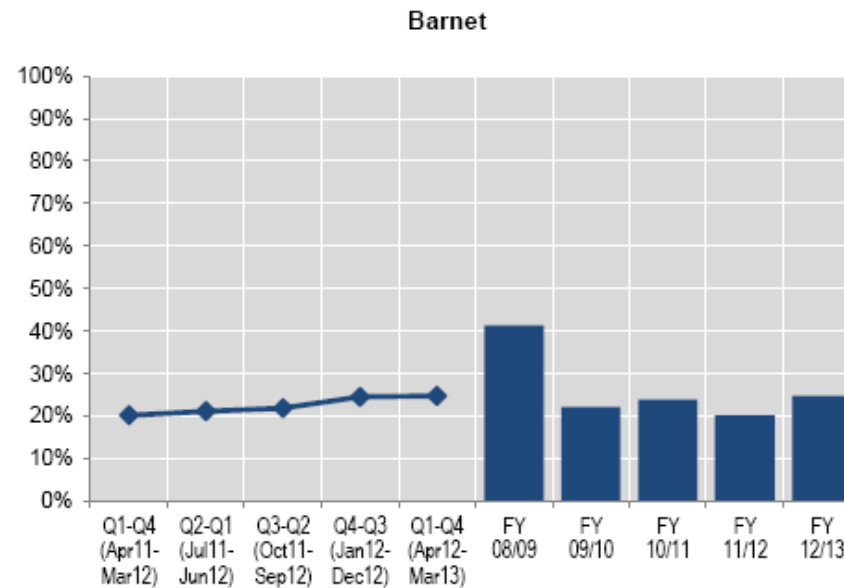
## Public Attitude Survey

**To what extent are you worried about ASB in the area?**  
 Base: all respondents, excluding 'don't know'

Difference from previous quarter  
 [Borough]: +1%

Difference from same quarter in 2011/12  
 [Borough]: +5%

% worried (very/fairly)	Barnet			MPS
	%	Base	Confidence interval	%
Q1-Q4 (Apr11-Mar12)	20%	392	±3.97%	26%
Q2-Q1 (Jul11-Jun12)	21%	394	±4.03%	26%
Q3-Q2 (Oct11-Sep12)	22%	399	±4.05%	26%
Q4-Q3 (Jan12-Dec12)	24%	397	±4.23%	27%
Q1-Q4 (Apr12-Mar13)	25%	397	±4.24%	26%
FY 08/09	41%	600	±3.94%	39%
FY 09/10	22%	590	±3.34%	25%
FY 10/11	24%	624	±3.34%	25%
FY 11/12	20%	392	±3.97%	26%
FY 12/13	25%	397	±4.24%	26%



## Public Attitude Survey

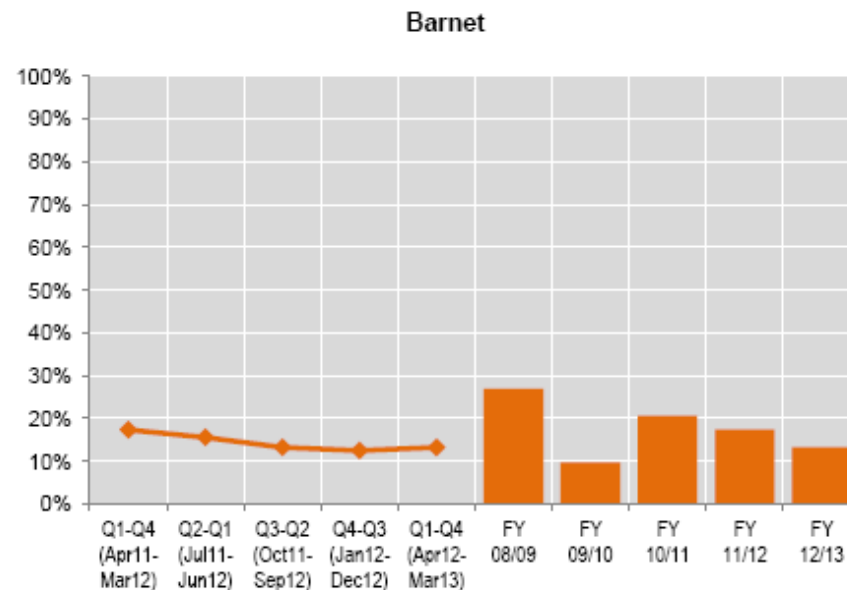
### Q10B: How much of a problem in the area are teenagers hanging around on the streets?

Base: all respondents, excluding 'don't know'

Difference from  
previous quarter  
[Borough]: ±0%

Difference from same  
quarter in 2011/12  
[Borough]: -4%

% problem (very/fairly big)	Barnet			MPS
	%	Base	Confidence interval	%
Q1-Q4 (Apr11-Mar12)	17%	397	±3.73%	22%
Q2-Q1 (Jul11-Jun12)	16%	397	±3.57%	23%
Q3-Q2 (Oct11-Sep12)	13%	399	±3.33%	23%
Q4-Q3 (Jan12-Dec12)	13%	399	±3.25%	24%
Q1-Q4 (Apr12-Mar13)	13%	400	±3.32%	24%
FY 08/09	27%	634	±3.45%	41%
FY 09/10	10%	627	±2.32%	29%
FY 10/11	21%	636	±3.14%	26%
FY 11/12	17%	397	±3.73%	22%
FY 12/13	13%	400	±3.32%	24%



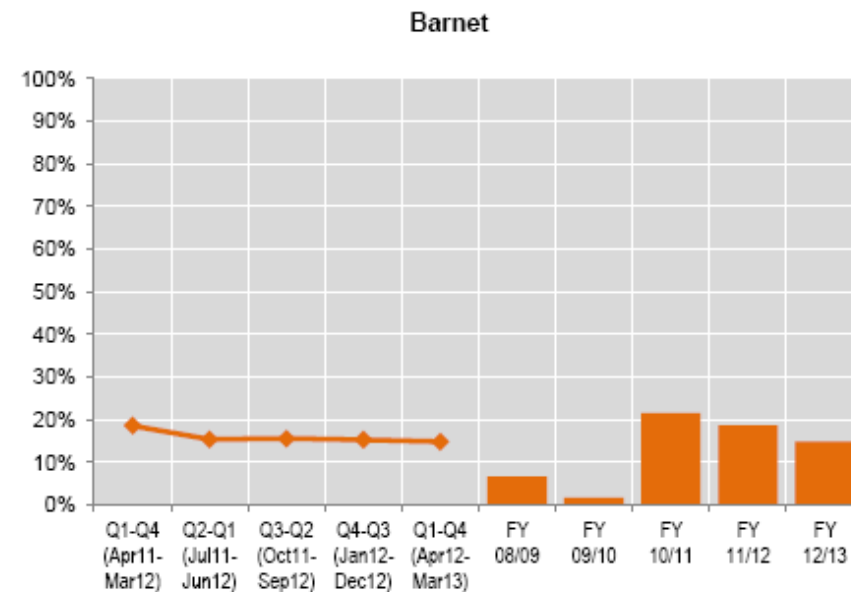
### Q10C: How much of a problem in the area is rubbish or litter lying around?

Base: all respondents, excluding 'don't know'

Difference from previous quarter  
[Borough]: ±0%

Difference from same quarter in 2011/12  
[Borough]: -4%

% problem (very/fairly big)	Barnet			MPS
	%	Base	Confidence interval	%
Q1-Q4 (Apr11-Mar12)	19%	399	±3.81%	26%
Q2-Q1 (Jul11-Jun12)	15%	399	±3.53%	26%
Q3-Q2 (Oct11-Sep12)	16%	400	±3.55%	27%
Q4-Q3 (Jan12-Dec12)	15%	400	±3.52%	28%
Q1-Q4 (Apr12-Mar13)	15%	400	±3.48%	28%
FY 08/09	7%	635	±1.93%	28%
FY 09/10	2%	629	±1.01%	24%
FY 10/11	21%	639	±3.18%	24%
FY 11/12	19%	399	±3.81%	26%
FY 12/13	15%	400	±3.48%	28%



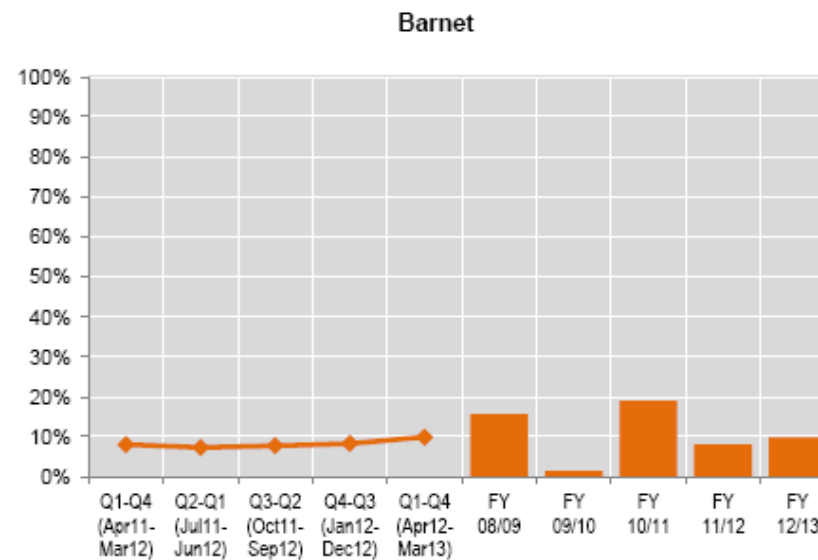
## Public Attitude Survey

**Q10D: How much of a problem in the area is vandalism, graffiti and other deliberate damage to property of vehicles? Base: all respondents, excluding 'don't know'**

Difference from previous quarter  
[Borough]: +2%

Difference from same quarter in 2011/12  
[Borough]: +2%

% problem (very/fairly big)	Barnet			MPS
	%	Base	Confidence interval	%
Q1-Q4 (Apr11-Mar12)	8%	396	±2.68%	15%
Q2-Q1 (Jul11-Jun12)	7%	396	±2.57%	15%
Q3-Q2 (Oct11-Sep12)	8%	398	±2.63%	15%
Q4-Q3 (Jan12-Dec12)	8%	395	±2.73%	16%
Q1-Q4 (Apr12-Mar13)	10%	394	±2.95%	16%
FY 08/09	16%	615	±2.87%	32%
FY 09/10	2%	589	±0.99%	20%
FY 10/11	19%	627	±3.08%	18%
FY 11/12	8%	396	±2.68%	15%
FY 12/13	10%	394	±2.95%	16%





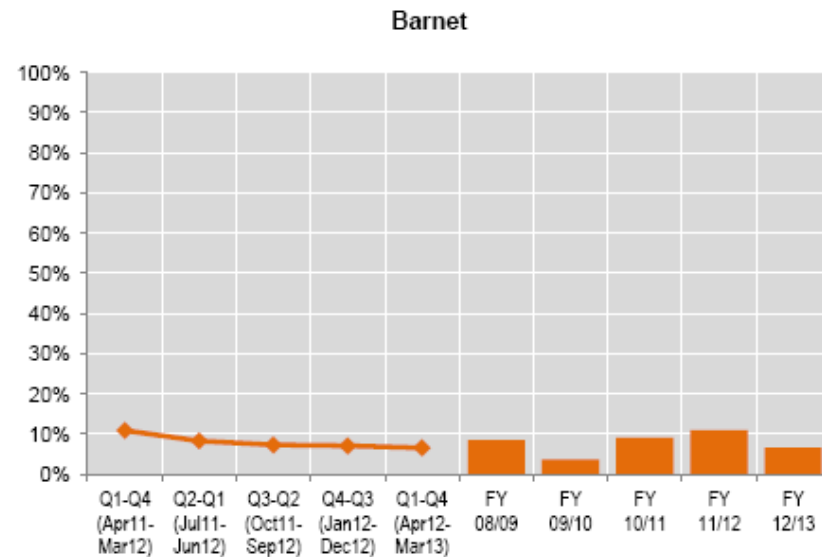
## Public Attitude Survey

**Q10F: How much of a problem in the area are people being drunk or rowdy in public places?**  
**Base: all respondents, excluding 'don't know'**

Difference from  
previous quarter  
[Borough]: ±0%

Difference from same  
quarter in 2011/12  
[Borough]: -4%

% problem (very/fairly big)	Barnet			MPS
	%	Base	Confidence interval	%
Q1-Q4 (Apr11-Mar12)	11%	396	±3.06%	17%
Q2-Q1 (Jul11-Jun12)	8%	397	±2.72%	18%
Q3-Q2 (Oct11-Sep12)	7%	399	±2.55%	18%
Q4-Q3 (Jan12-Dec12)	7%	399	±2.51%	19%
Q1-Q4 (Apr12-Mar13)	7%	397	±2.43%	19%
FY 08/09	8%	571	±2.28%	30%
FY 09/10	4%	566	±1.55%	20%
FY 10/11	9%	616	±2.26%	15%
FY 11/12	11%	396	±3.06%	17%
FY 12/13	7%	397	±2.43%	19%



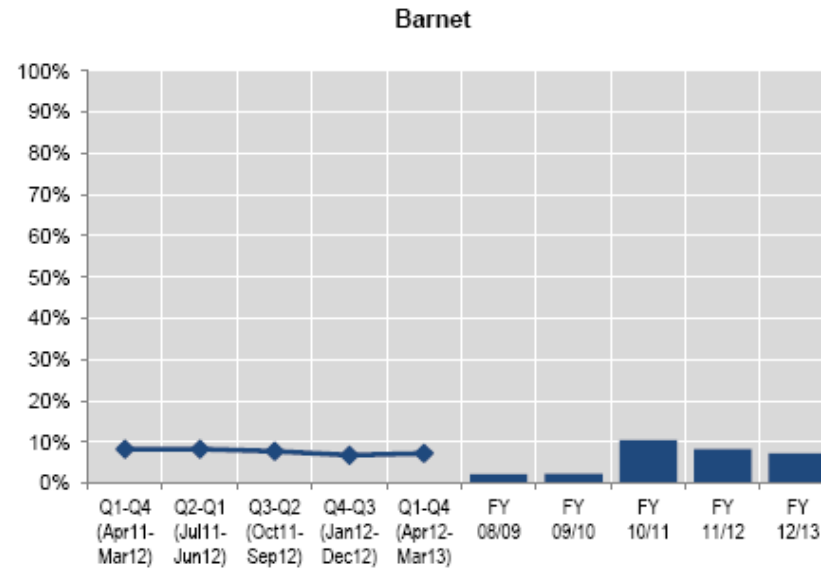
## Q10A: How much of a problem in the area are noisy neighbours or loud parties?

Base: all respondents, excluding 'don't know'

Difference from previous quarter [Borough]: ±0%

Difference from same quarter in 2011/12 [Borough]: -1%

% problem (very/fairly big)	Barnet			MPS
	%	Base	Confidence interval	%
Q1-Q4 (Apr11-Mar12)	8%	400	±2.7%	11%
Q2-Q1 (Jul11-Jun12)	8%	400	±2.7%	12%
Q3-Q2 (Oct11-Sep12)	8%	400	±2.62%	12%
Q4-Q3 (Jan12-Dec12)	7%	400	±2.46%	13%
Q1-Q4 (Apr12-Mar13)	7%	400	±2.54%	13%
FY 08/09	2%	633	±1.15%	16%
FY 09/10	2%	634	±1.16%	12%
FY 10/11	10%	638	±2.37%	13%
FY 11/12	8%	400	±2.7%	11%
FY 12/13	7%	400	±2.54%	13%



### Promoting public safety: Proxy SPI10c Perceptions of local drug use and dealing

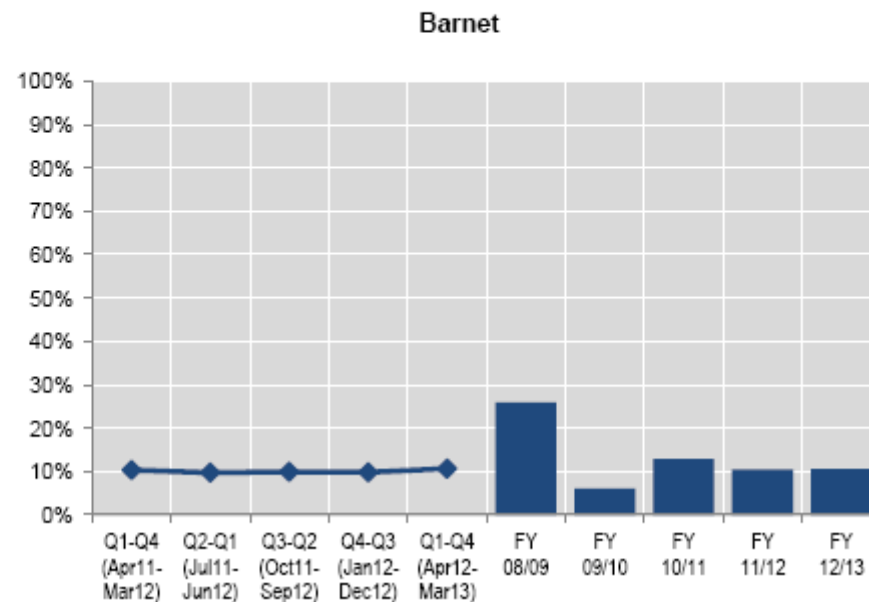
#### Q10E: How much of a problem in the area are people using or dealing drugs?

Base: all respondents, excluding 'don't know'

Difference from previous quarter  
[Borough]: +1%

Difference from same quarter in 2011/12  
[Borough]: +1%

% problem (very/fairly big)	Barnet			MPS
	%	Base	Confidence interval	%
Q1-Q4 (Apr11-Mar12)	10%	387	±3.03%	17%
Q2-Q1 (Jul11-Jun12)	10%	390	±2.94%	19%
Q3-Q2 (Oct11-Sep12)	10%	393	±2.96%	20%
Q4-Q3 (Jan12-Dec12)	10%	388	±2.96%	21%
Q1-Q4 (Apr12-Mar13)	11%	385	±3.08%	22%
FY 08/09	26%	389	±4.36%	36%
FY 09/10	6%	468	±2.16%	20%
FY 10/11	13%	542	±2.81%	19%
FY 11/12	10%	387	±3.03%	17%
FY 12/13	11%	385	±3.08%	22%



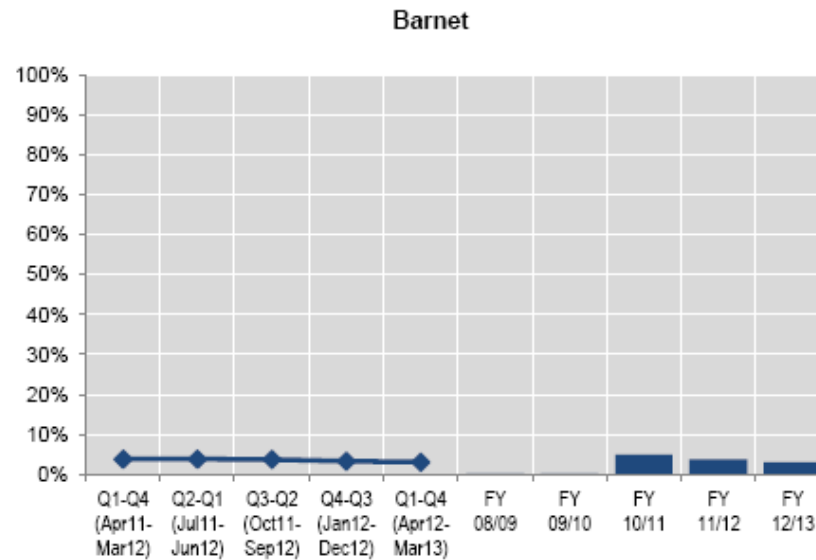
## Q10G: How much of a problem in the area are abandoned or burnt-out cars?

Base: all respondents, excluding 'don't know'

Difference from previous quarter [Borough]: ±0%

Difference from same quarter in 2011/12 [Borough]: -1%

% problem (very/fairly big)	Barnet			MPS
	%	Base	Confidence interval	%
Q1-Q4 (Apr11-Mar12)	4%	395	±1.89%	4%
Q2-Q1 (Jul11-Jun12)	4%	395	±1.89%	5%
Q3-Q2 (Oct11-Sep12)	4%	399	±1.87%	5%
Q4-Q3 (Jan12-Dec12)	3%	399	±1.74%	5%
Q1-Q4 (Apr12-Mar13)	3%	396	±1.69%	5%
FY 08/09	0%	568	±0.35%	10%
FY 09/10	0%	559	±0.37%	5%
FY 10/11	5%	619	±1.71%	5%
FY 11/12	4%	395	±1.89%	4%
FY 12/13	3%	396	±1.69%	5%



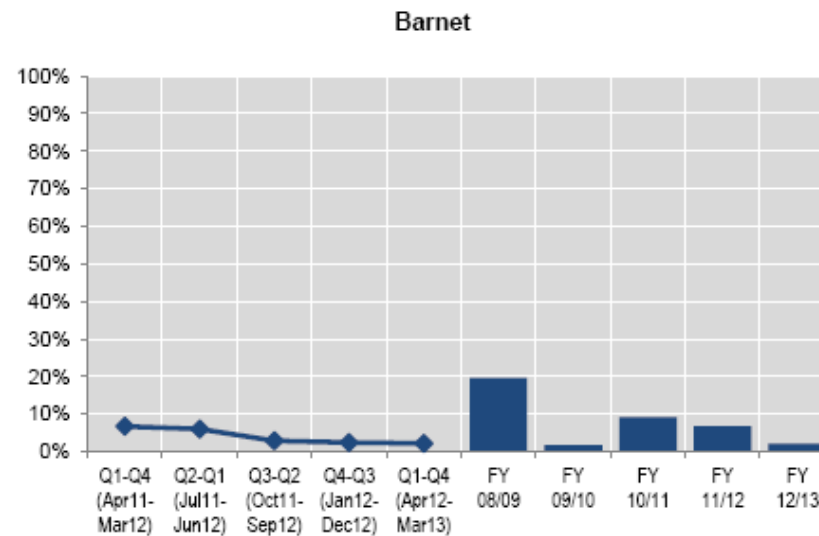
## NQ43: To what extent do you think that gangs are a problem in the area?

Base: all respondents, excluding 'don't know'

Difference from previous quarter [Borough]: ±0%

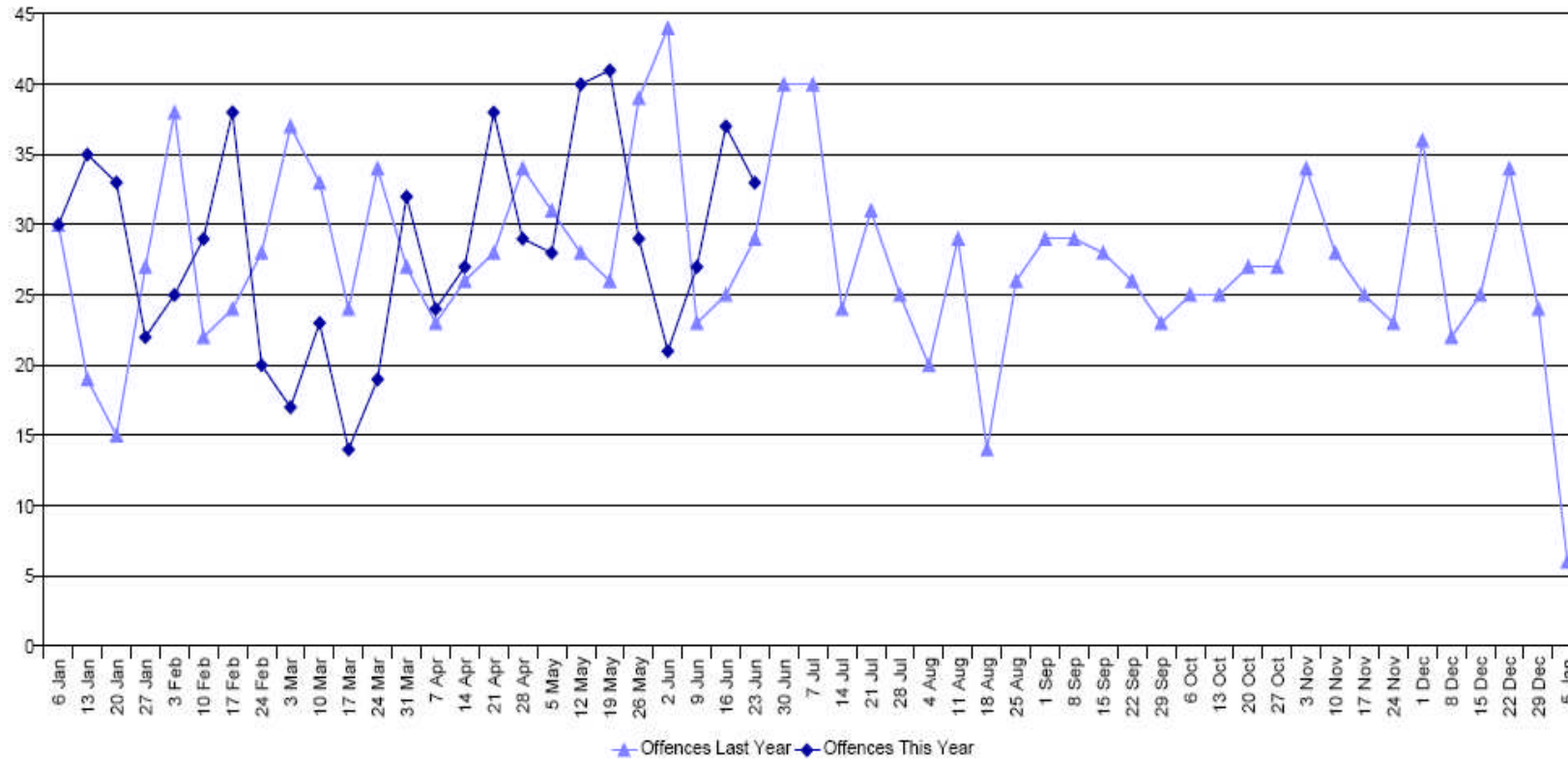
Difference from same quarter in 2011/12 [Borough]: -5%

% problem (major/minor)	Barnet			MPS
	%	Base	Confidence interval	%
Q1-Q4 (Apr11-Mar12)	7%	388	±2.49%	17%
Q2-Q1 (Jul11-Jun12)	6%	388	±2.35%	18%
Q3-Q2 (Oct11-Sep12)	3%	389	±1.65%	18%
Q4-Q3 (Jan12-Dec12)	2%	386	±1.51%	17%
Q1-Q4 (Apr12-Mar13)	2%	380	±1.44%	16%
FY 08/09	20%	154	±6.27%	38%
FY 09/10	2%	397	±1.28%	21%
FY 10/11	9%	521	±2.47%	12%
FY 11/12	7%	388	±2.49%	17%
FY 12/13	2%	380	±1.44%	16%



# Priority 3 Violent crime

Weekly Violence With Injury Performance - Barnet

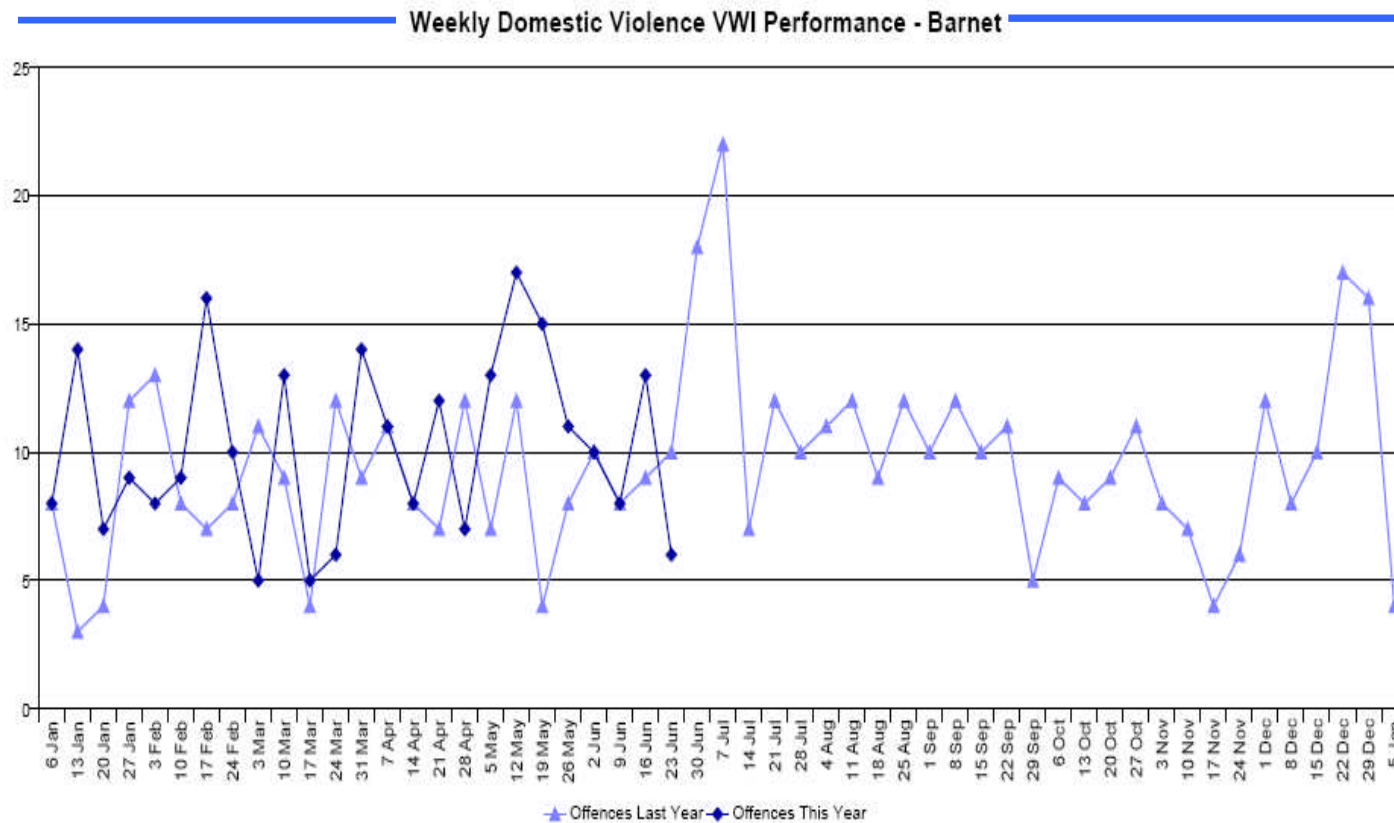


FYTD Totals are calculated from 1 April

Offences	14 Apr	21 Apr	28 Apr	5 May	12 May	19 May	26 May	2 Jun	9 Jun	16 Jun	23 Jun	FYTD Total
Last Year	26	28	34	31	28	26	39	44	23	25	29	<b>356</b>
This Year	27	38	29	28	40	41	29	21	27	37	33	<b>374</b>
% Change	3.8%	35.7%	-14.7%	-9.7%	42.9%	57.7%	-25.6%	-52.3%	17.4%	48.0%	13.8%	<b>5.1%</b>

# Priority 3 Violent crime

with a specific focus on domestic violence



Date	Volume	Change vs. prev year
2011/12	442	
2012/13	512	+15.8%
2013/14 (FYTD)	131	<b>+23.6%</b>

FYTD Totals are calculated from 1 April

Offences	14 Apr	21 Apr	28 Apr	5 May	12 May	19 May	26 May	2 Jun	9 Jun	16 Jun	23 Jun	FYTD Total
Last Year	8	7	12	7	12	4	8	10	8	9	10	106
This Year	8	12	7	13	17	15	11	10	8	13	6	131
% Change	0.0%	71.4%	-41.7%	85.7%	41.7%	275.0%	37.5%	0.0%	0.0%	44.4%	-40.0%	<b>23.6%</b>

# Domestic Violence Repeat Victims Qrt 1 Performance

## Domestic Violence Repeat Victims

May 2013

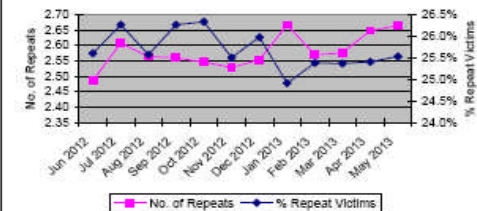
BoroughName	No. of Previous Incidents							Total	Average No. of Previous Incidents, per Victim	% Victims that are Repeat Victims
	1	2	3-6	7-10	11-15	16-20	20+			
Barnet	37	21	30	3	1	0	1	93	2.67	22.67%
Camden	33	11	14	5	3	0	1	67	3.19	26.67%
Enfield	53	28	20	3	0	0	0	102	2.01	21.83%
Hackney	44	30	31	4	0	0	1	110	2.46	24.02%
Haringey	45	31	21	3	1	2	0	103	2.19	23.08%
Islington	37	15	20	3	3	0	0	78	2.63	32.33%
<b>North Total</b>	<b>249</b>	<b>134</b>	<b>136</b>	<b>21</b>	<b>8</b>	<b>2</b>	<b>3</b>	<b>553</b>		
Westminster	19	2	6	1	0	0	0	28	2.19	10.30%
Barking & Dagenham	59	35	46	12	1	0	1	154	3.58	29.23%
Havering	59	15	25	7	0	1	0	107	3.14	29.91%
Newham	35	27	31	4	2	0	0	99	1.98	19.97%
Redbridge	50	27	23	3	0	0	0	103	2.19	25.12%
Tower Hamlets	43	23	43	2	2	4	0	117	3.18	22.54%
Waltham Forest	77	22	27	5	2	1	0	134	1.89	27.27%
<b>North East Total</b>	<b>323</b>	<b>149</b>	<b>195</b>	<b>33</b>	<b>7</b>	<b>6</b>	<b>1</b>	<b>714</b>		
Brent	53	29	31	5	5	1	0	124	2.84	26.90%
Ealing	59	21	36	7	4	0	1	128	2.88	28.34%
Hammersmith & Fulham	35	14	19	1	1	1	0	71	3.04	24.21%
Harrow	20	10	10	0	0	0	0	40	2.20	15.47%
Hillingdon	39	31	31	3	0	0	0	104	2.06	27.05%
Hounslow	54	19	35	7	2	0	0	117	2.84	26.56%
Kensington & Chelsea	9	6	5	1	0	0	0	21	2.17	16.67%
<b>North West Total</b>	<b>269</b>	<b>130</b>	<b>167</b>	<b>24</b>	<b>12</b>	<b>2</b>	<b>1</b>	<b>605</b>		
Bexley	30	23	30	5	3	1	0	92	2.61	34.51%
Bromley	52	24	31	5	0	0	0	112	2.52	26.64%
Greenwich	39	18	40	5	5	3	0	108	3.48	25.32%
Lambeth	61	31	37	2	1	0	0	132	2.38	24.12%
Lewisham	76	32	36	4	2	0	0	150	2.68	32.24%
Southwark	57	26	46	10	3	1	0	143	2.92	26.83%
<b>South East Total</b>	<b>315</b>	<b>152</b>	<b>220</b>	<b>31</b>	<b>14</b>	<b>5</b>	<b>0</b>	<b>737</b>		
Croydon	73	40	49	6	4	0	0	172	2.49	25.80%
Kingston Upon Thames	21	6	10	4	0	1	1	43	2.00	22.84%
Merton	30	11	17	5	1	0	0	64	3.02	31.56%
Richmond Upon Thames	26	10	11	3	1	0	0	51	2.81	32.26%
Sutton	42	11	12	4	1	0	0	70	2.48	25.71%
Wandsworth	44	18	17	7	0	0	0	86	2.59	22.93%
<b>South West Total</b>	<b>236</b>	<b>98</b>	<b>116</b>	<b>29</b>	<b>7</b>	<b>1</b>	<b>1</b>	<b>486</b>		
SCD	0	0	0	0	0	0	0	0		
SO18	0	0	0	0	0	0	0	0		
<b>MPS</b>	<b>1411</b>	<b>663</b>	<b>840</b>	<b>139</b>	<b>48</b>	<b>16</b>	<b>6</b>	<b>3123</b>	<b>2.56</b>	<b>25.53%</b>

Total Repeat Victims by No. of Previous Incidents



Of the 3123 repeat victims of Domestic violence identified during May 2013, 45.2% had been a victim of crime only one other time during the previous 12 months, with a further 21.2% having been a victim two times.

Average No. of Previous Incidents per Victim and % of Victims who were Repeat Victims



In May 2013, the average number of times a Domestic Violence repeat victim, who had also been a victim of crime during the previous 12 months, increased to 2.67 compared with 2.65 in April 2013.

The percentage of total Domestic Violence victims who had been a victim of crime during the previous 12 months increased from 25.41% in April 2013 to 25.53% in May 2013.



## Priority 4: Barnet Integrated Offender Management Unit

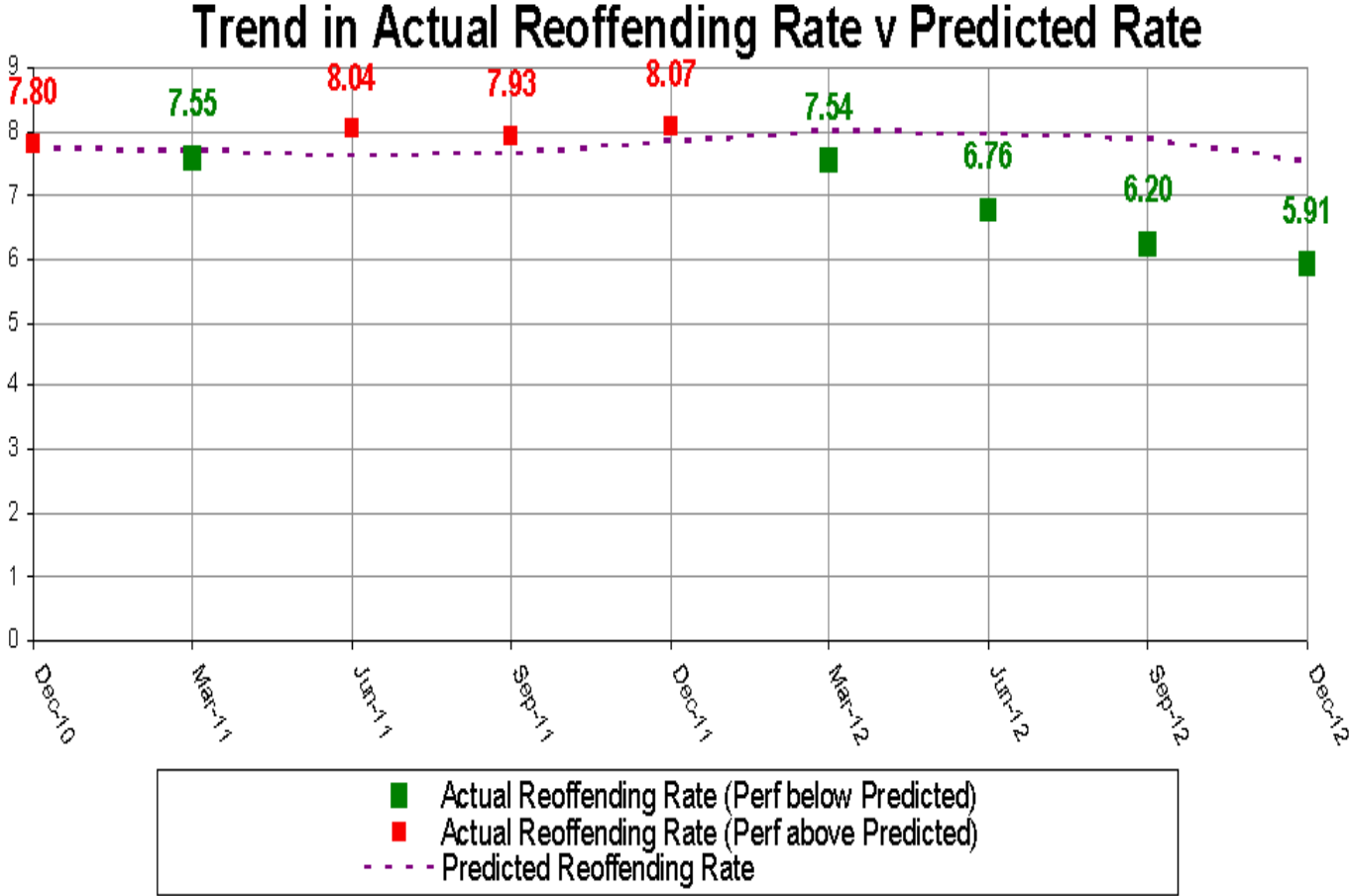
- Performance for the first 6 months and the predicted performance for the first 12 months if the current trends are maintained. This would anticipate a reduction in costs of £156,000 (based on Home Office costing guidelines) for Home Office Recordable offences.
- Pre IOM dates 12 months from 6<sup>th</sup> June 2011, first 6 months data 6<sup>th</sup> June 2012 to 5<sup>th</sup> Nov 2012

	<b>Total Convictions Pre IOM</b>	<b>Total Convictions Post IOM (first 6 months)</b>	<b>Total Convictions Predicted for 12 Month Period</b>	<b>Reduction Number (percentage)</b>
<b>Stat Offender</b>	259	82	164	95 (36%)
<b>Home office Recordable offences</b>	135	28	56	79 (58%)
<b>Non Stat Offender</b>	125	40	80	45 (37%)
<b>Home Office Recordable offences</b>	55	7	14	41 (74%)

*Pre IOM dates 12 months from 6th June 2011, first 6 months data 6th June 2012 to 5th Nov 2012*

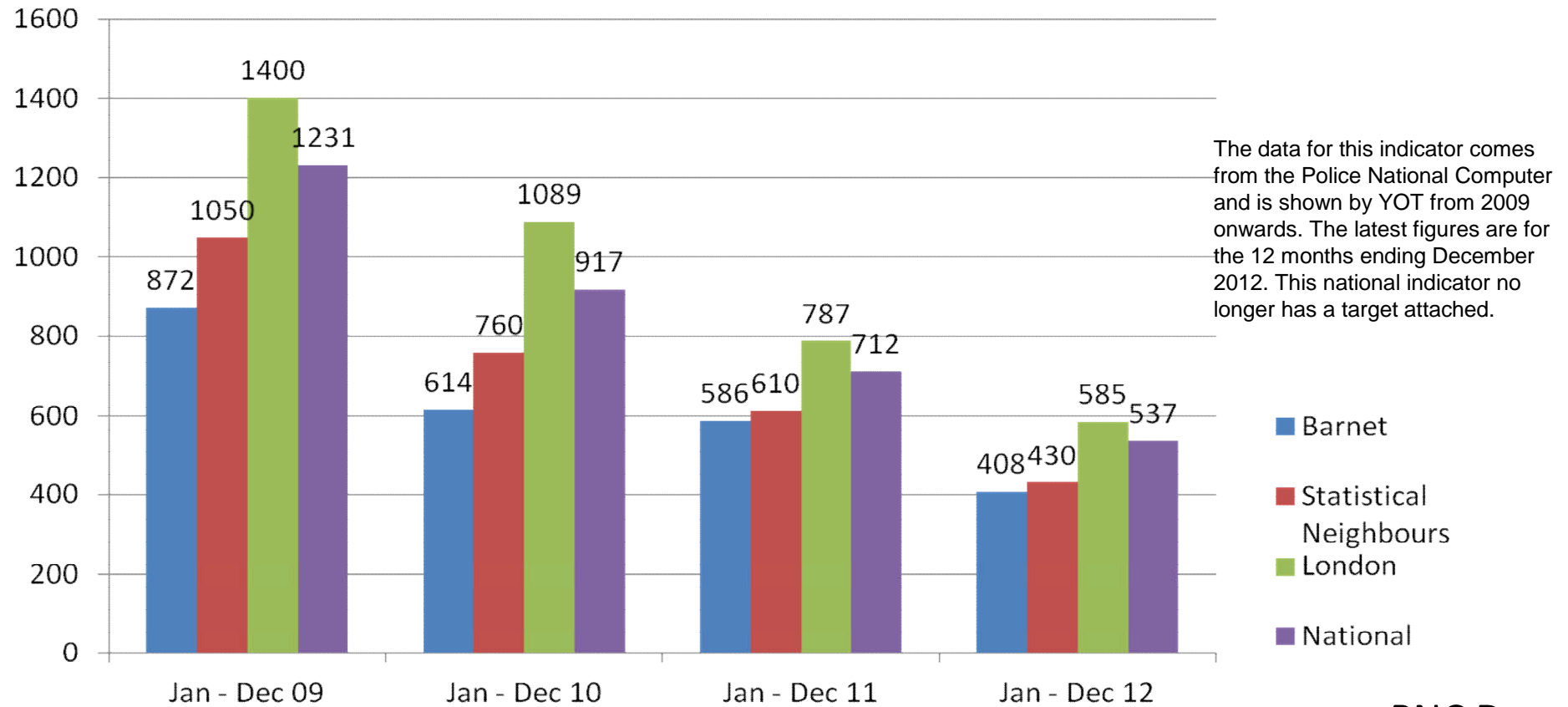
**The Future** It is proposed that the IOM Cohort is at least doubled from its current membership to over 200 individuals, this will now include Gang Members, Sentence Expiry Date prison releases, Female offenders and those being arrested but failing drug testing in custody and then failing to access Drug Rehabilitation facilities.

# Priority 4: Barnet Integrated Offender Management Reoffending Trend



# FTE (first time entrants) Rate Comparison - YOT

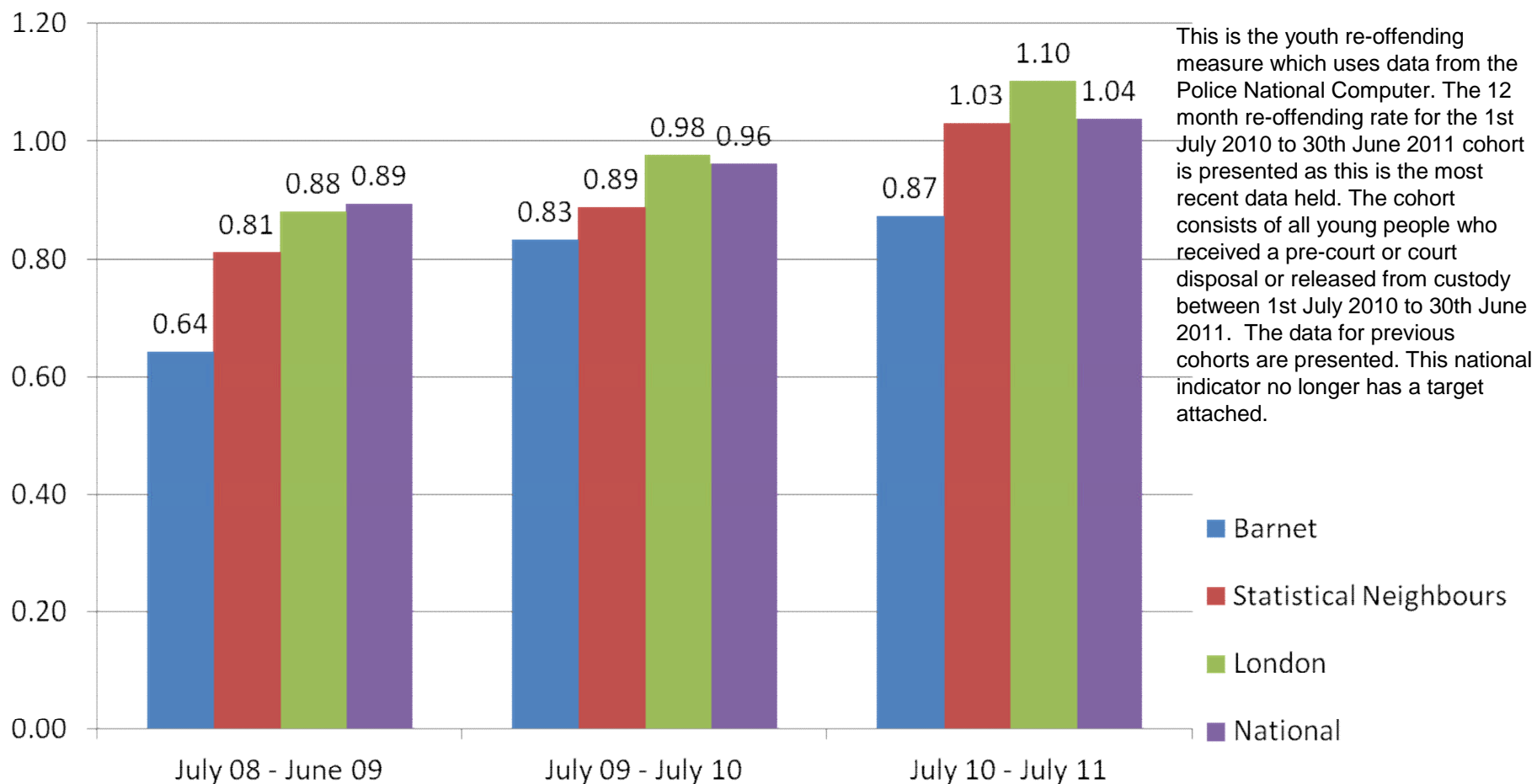
Rate per 100,000 of the 10-17 population



The data for this indicator comes from the Police National Computer and is shown by YOT from 2009 onwards. The latest figures are for the 12 months ending December 2012. This national indicator no longer has a target attached.

PNC Data

## Priority 4 Re-offending rates after 12 months



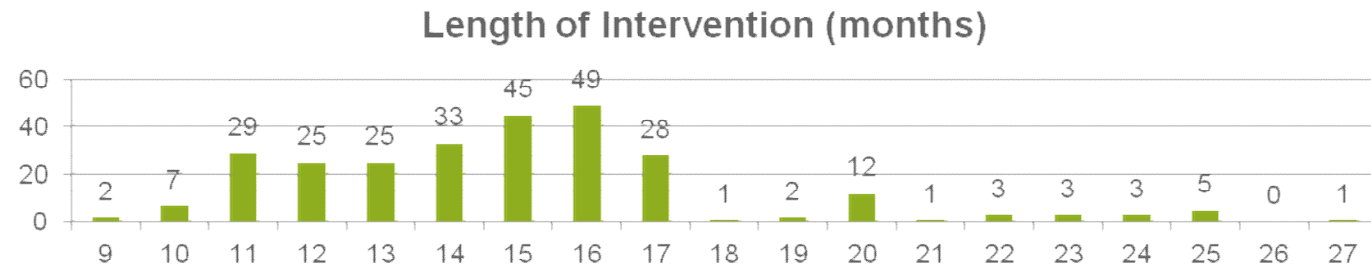
Priority 5 Broader cost-effective intervention

# Troubled Families Update

Update briefing from Duncan Tessier Early Intervention and Prevention; Assistant Director Children's Service

## Troubled families - Context

- **2013/14 is a critical year to analyse our success** - We have worked with over 550 families since the programme launched in 2011. 235 families have been in the programme for more than a year - so we can begin to evaluate success.



- **The programme has longevity** - Central Government further committed to the programme- as announced in Treasury spending round today:
  - investment of additional £200m to extend intensive help to 400,000 high risk families in 2015/16
- **Partnership working/community budgets will be key** - New incentives for local services such as police, health and social services to join up. Path finding approach- if we can show it work here it can be a model for other services.....

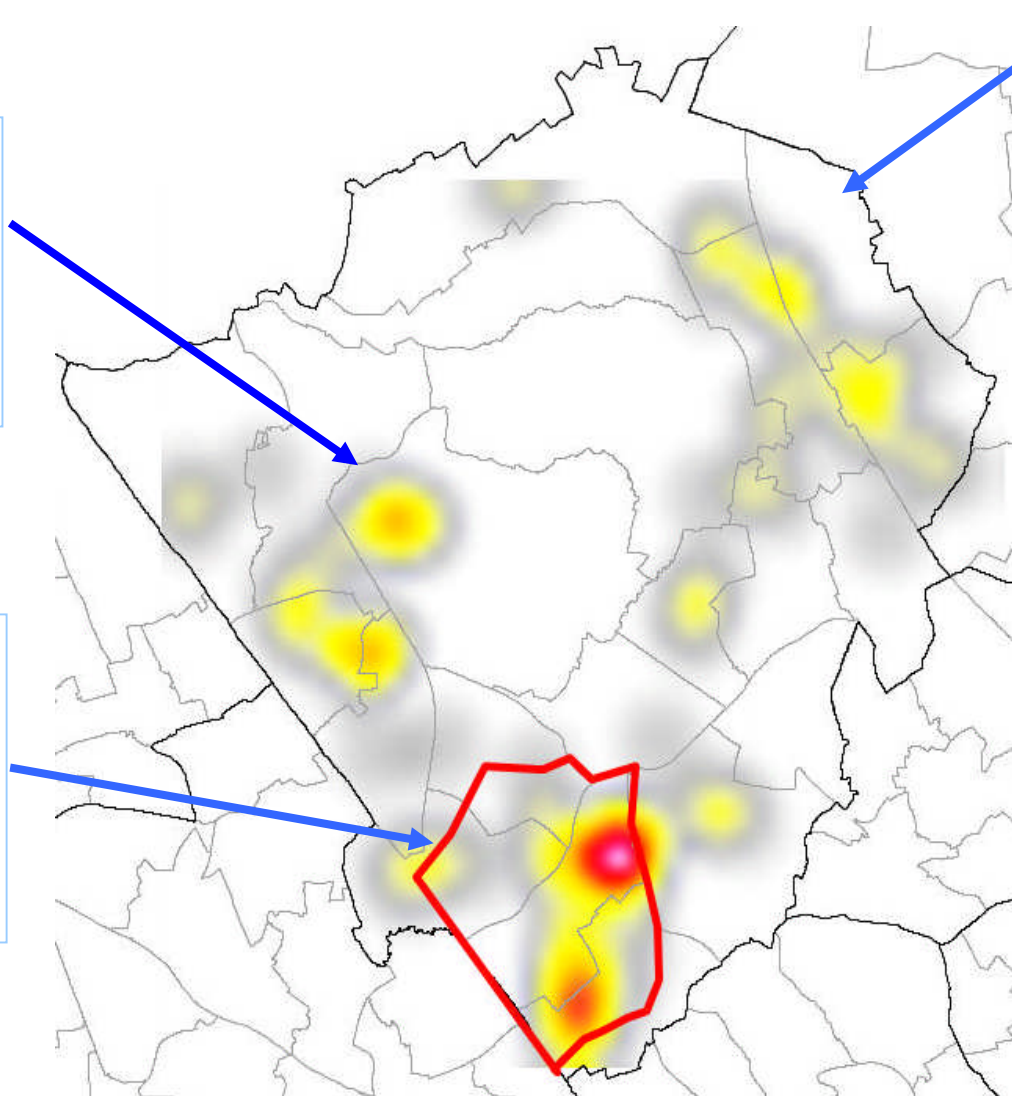
# Priority 6 - Burglary overview focus on places where offences take place

Last two weeks (to 01/07/2013)  
main burglary locations

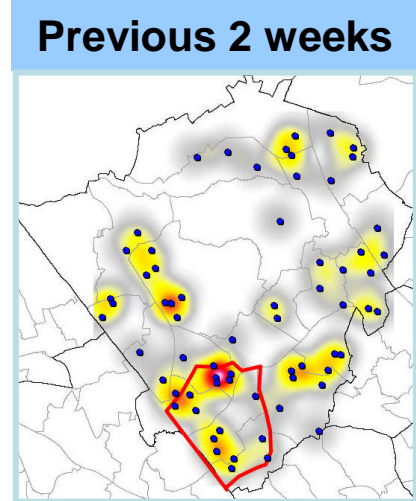
## Emerging Hotspots

NW7 – 6 offences in the last 2 weeks (Byron Road, Birbeck Road, Daws Lane)  
NW9 – 8 offences in the last two weeks. (the Grahame Park Estate).

18 burglary allegations in the last two weeks, compared to 23 in the preceding two weeks and compared to 20 in the same weeks last year. FYTD there has been a 12.4% reduction.



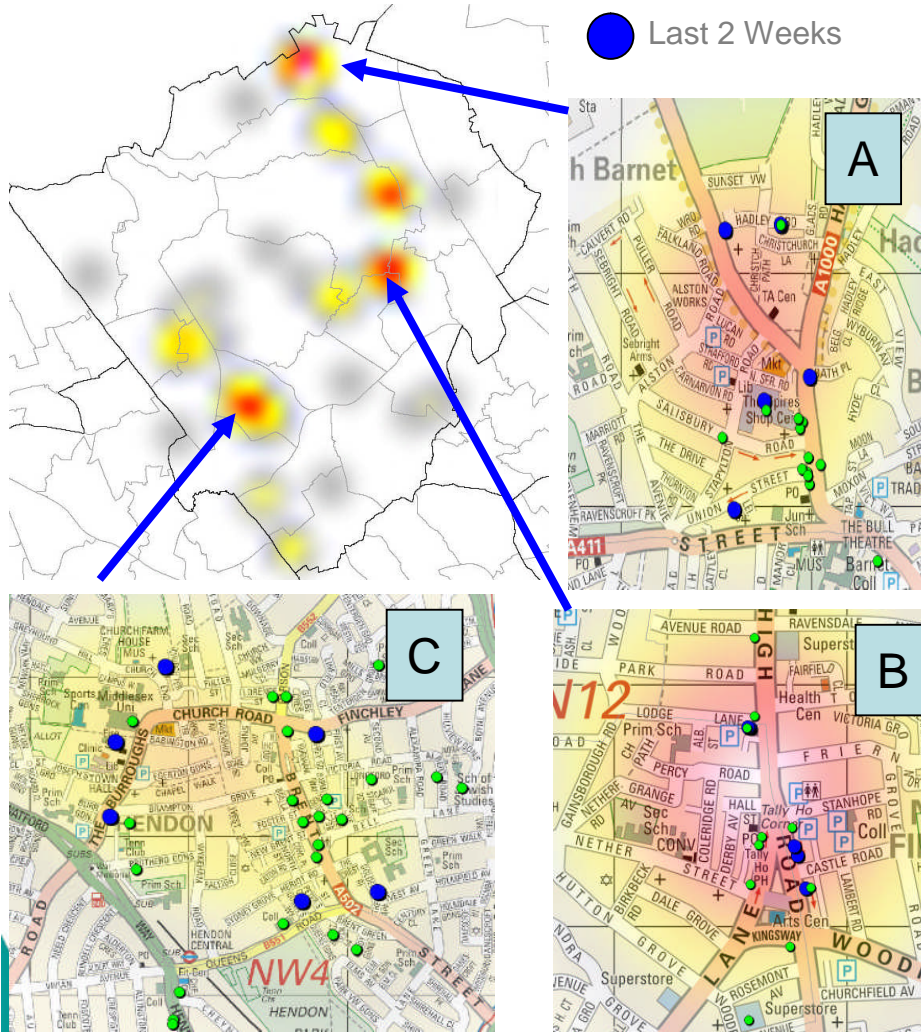
EN4/EN5 - 10 offences in the last 2 weeks compared with 8 offences in the previous two weeks. Offences are concentrated around Berkley Crescent, Cranbrook Road, Lancaster Road and Longmore Avenue between late afternoon and early evening.



# Non-Res burglary Summary

## Last 2 weeks Hotspot Map

- Last 2 months
- Last 2 Weeks



**Non Residential Burglaries** In the last two weeks the main hotspot areas are NW11 and EN5. Charity shops and schools have also been targeted in these areas. Offences are also occurring around Graham Park Estate NW9

- A) **High Barnet** – overnight, main street High Street / High Road, shops / commercial premises. Emerging hotspot around Underhill, Dollis Valley Drive. 8 offences in the last two weeks.
- A) **North Finchley** – overnight, main streets High Road, shops / commercial premises. offences in the last two weeks around Finchley Road and Temple fortune. Emerging hotspot: along the Great North Road
- C) **Hendon NW4** – overnight peaking around 3-4am, main streets Brent Street, shops / commercial premises. Emerging hotspot: Graham Park NW9. 5 offences last two weeks



# Priority 7 Tackling repeat victimisation

Target	Baseline 2010/11 (based on map-info)	2013/2014
Reduce repeat victimisation - residential burglary	6.3%	25%
Reduce repeat victimisation - ASB	10%	10%
Reduce repeat victimisation for those domestic violence cases managed by a MARAC	8%	8%

## Priority 7: Tackling Domestic Violence repeat victimisation

Whilst the number of repeats is the same for 2012/13 and 2013/14 there is an increase of almost 50% of cases heard in Qtr 1 of this year.

Note: A better way of measuring repeat victimisation is the rate of detection of repeats and referral into MARAC for safeguarding as opposed to reduction in victimisation.

Qtr1	Total cases	Repeat cases	Percentage repeats
2012/13	35	6	<b>17%</b>
2013/14	72	6	<b>8%</b>

## % ASB Repeat Callers By Borough Over The Last 24 Weeks By 4 Week Period

Borough	Period						Average
	(1)	(2)	(3)	(4)	(5)	(6)	
	13/05/2013 - 09/06/2013	15/04/2013 - 12/05/2013	18/03/2013 - 14/04/2013	18/02/2013 - 17/03/2013	21/01/2013 - 17/02/2013	24/12/2012 - 20/01/2013	
<b>East</b>							
Barking & Dagenham	9%	10%	8%	9%	9%	11%	9%
Enfield	11%	10%	8%	9%	9%	11%	9%
Hackney	14%	11%	11%	11%	11%	13%	11%
Haringey	11%	12%	13%	11%	12%	10%	12%
Havering	10%	8%	12%	12%	14%	11%	11%
Newham	15%	9%	9%	9%	8%	10%	9%
Redbridge	11%	12%	11%	11%	13%	12%	12%
Tower Hamlets	16%	11%	10%	10%	11%	11%	11%
Waltham Forest	11%	15%	13%	10%	12%	12%	13%
East Total	12%	12%	12%	10%	12%	11%	11%
<b>North</b>							
<b>Barnet</b>	<b>10%</b>	<b>11%</b>	<b>8%</b>	<b>9%</b>	<b>10%</b>	<b>10%</b>	<b>10%</b>
Brent	11%	11%	13%	11%	11%	11%	11%
Camden	13%	13%	10%	11%	10%	13%	12%
Ealing	11%	10%	10%	11%	9%	10%	10%
Harrow	11%	9%	11%	8%	9%	10%	10%
Islington	13%	11%	11%	9%	8%	12%	11%
North Total	12%	11%	10%	10%	10%	11%	11%

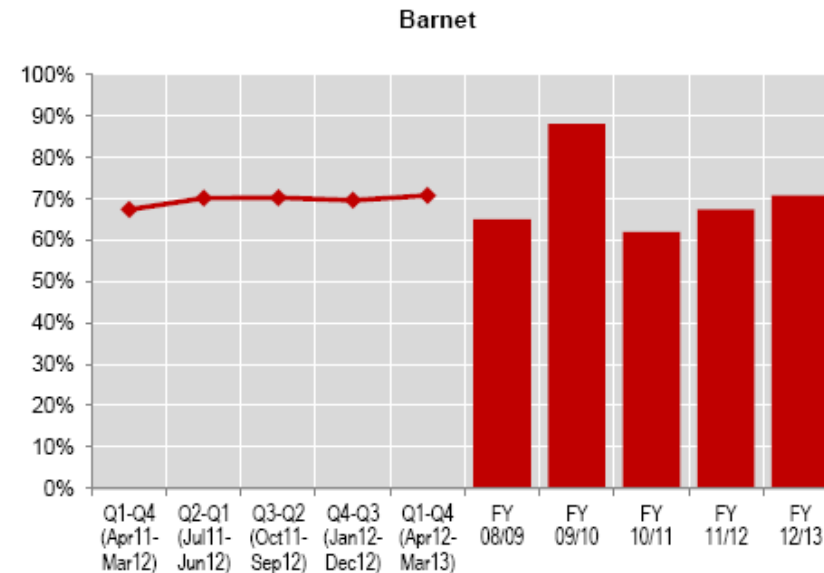
# Priority 8 Building reassurance and confidence

## Drivers of confidence in policing: ENGAGEMENT WITH THE COMMUNITY

**Q62F: To what extent do you agree that the police in this area are dealing with the things that matter to people in the community?** Base: all respondents, excluding 'don't know'

Difference from previous quarter [Borough]: +1%      Difference from same quarter in 2011/12 [Borough]: +4%

% agree (strongly/tend to)	Barnet			MPS
	%	Base	Confidence interval	%
Q1-Q4 (Apr11-Mar12)	67%	368	±4.79%	67%
Q2-Q1 (Jul11-Jun12)	70%	375	±4.63%	66%
Q3-Q2 (Oct11-Sep12)	70%	383	±4.58%	66%
Q4-Q3 (Jan12-Dec12)	70%	382	±4.61%	65%
Q1-Q4 (Apr12-Mar13)	71%	383	±4.56%	65%
FY 08/09	65%	504	±4.16%	65%
FY 09/10	88%	527	±2.77%	64%
FY 10/11	62%	545	±4.08%	68%
FY 11/12	67%	368	±4.79%	67%
FY 12/13	71%	383	±4.56%	65%



# Priority 8 Building reassurance and confidence

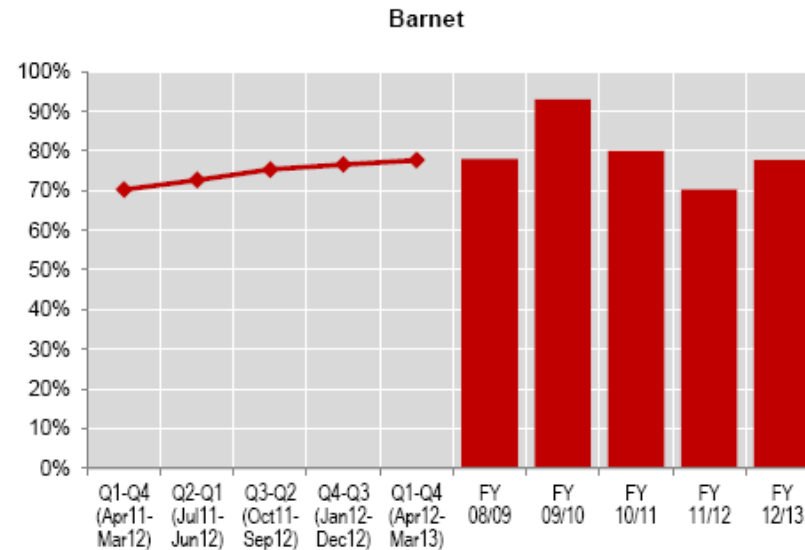
## Drivers of confidence in policing: ENGAGEMENT WITH THE COMMUNITY

**Q62A: To what extent do you agree that the police in this area can be relied on to be there when you need them? Base: all respondents, excluding 'don't know'**

Difference from previous quarter  
[Borough]: +1%

Difference from same quarter in 2011/12  
[Borough]: +8%

% agree (strongly/tend to)	Barnet			MPS
	%	Base	Confidence interval	%
Q1-Q4 (Apr11-Mar12)	70%	380	±4.6%	72%
Q2-Q1 (Jul11-Jun12)	73%	388	±4.43%	72%
Q3-Q2 (Oct11-Sep12)	75%	393	±4.26%	72%
Q4-Q3 (Jan12-Dec12)	77%	389	±4.21%	72%
Q1-Q4 (Apr12-Mar13)	78%	390	±4.13%	72%
FY 08/09	78%	500	±3.63%	67%
FY 09/10	93%	557	±2.12%	68%
FY 10/11	80%	570	±3.28%	75%
FY 11/12	70%	380	±4.6%	72%
FY 12/13	78%	390	±4.13%	72%



# Priority 8 Building reassurance and confidence

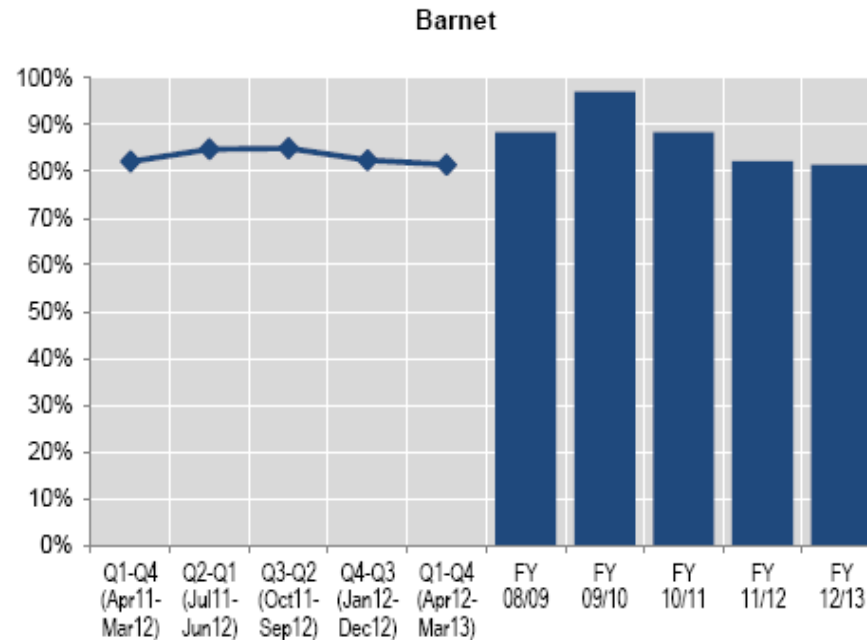
## Q21: How safe do you feel walking alone in the area after dark?

Base: all respondents, excluding 'don't know', 'do not go out alone', 'do not go out at all'

Difference from previous quarter  
[Borough]: -1%

Difference from same quarter in 2011/12  
[Borough]: -1%

% safe (very/fairly)	Barnet			MPS
	%	Base	Confidence interval	%
Q1-Q4 (Apr11-Mar12)	82%	336	±4.1%	78%
Q2-Q1 (Jul11-Jun12)	85%	348	±3.78%	78%
Q3-Q2 (Oct11-Sep12)	85%	359	±3.7%	78%
Q4-Q3 (Jan12-Dec12)	82%	352	±3.98%	78%
Q1-Q4 (Apr12-Mar13)	81%	350	±4.07%	79%
FY 08/09	88%	375	±3.25%	74%
FY 09/10	97%	426	±1.61%	74%
FY 10/11	88%	454	±2.95%	77%
FY 11/12	82%	336	±4.1%	78%
FY 12/13	81%	350	±4.07%	79%



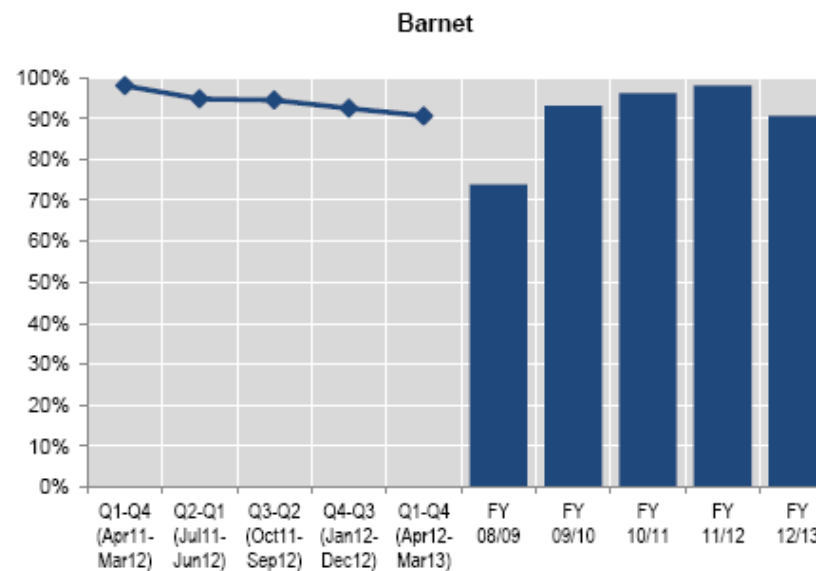
## Public Attitude Survey

**Q54A: On the last occasion, how safe did you feel on the bus?** Base: all respondents who had travelled on the bus the previous week, excluding 'don't know'

Difference from previous quarter [Borough]: -1%

Difference from same quarter in 2011/12 [Borough]: -7%

% safe (very/fairly)	Barnet			MPS
	%	Base	Confidence interval	%
Q1-Q4 (Apr11-Mar12)	98%	199	±1.95%	94%
Q2-Q1 (Jul11-Jun12)	95%	229	±2.89%	93%
Q3-Q2 (Oct11-Sep12)	94%	254	±2.81%	92%
Q4-Q3 (Jan12-Dec12)	92%	278	±3.11%	91%
Q1-Q4 (Apr12-Mar13)	91%	308	±3.26%	91%
FY 08/09	74%	135	±7.41%	95%
FY 09/10	93%	121	±4.55%	97%
FY 10/11	96%	299	±2.18%	97%
FY 11/12	98%	199	±1.95%	94%
FY 12/13	91%	308	±3.26%	91%



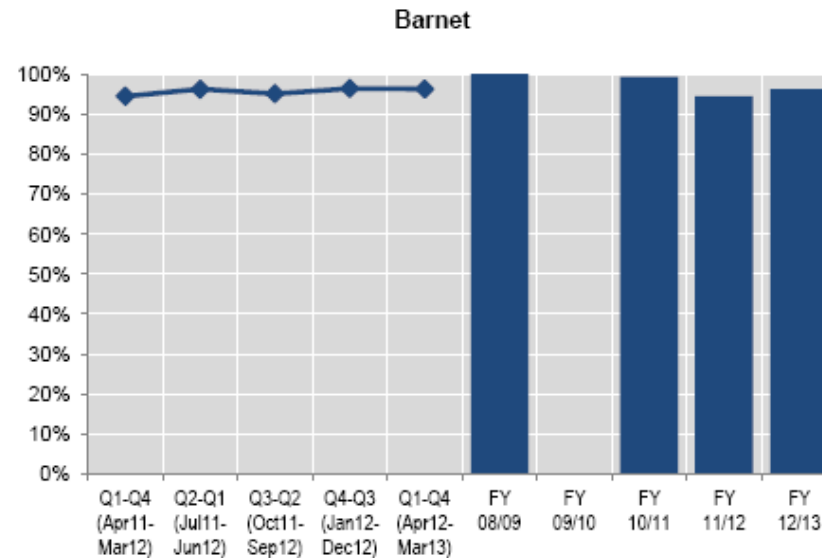
## Q54E: On the last occasion, how safe did you feel in the taxi?

Base: all respondents who had travelled in a taxi the previous week, excluding 'don't know'

Difference from previous quarter [Borough]: ±0%

Difference from same quarter in 2011/12 [Borough]: +2%

% safe (very/fairly)	Barnet			MPS
	%	Base	Confidence interval	%
Q1-Q4 (Apr11-Mar12)	94%	18	±10.59%	97%
Q2-Q1 (Jul11-Jun12)	96%	79	±4.22%	94%
Q3-Q2 (Oct11-Sep12)	95%	143	±3.54%	94%
Q4-Q3 (Jan12-Dec12)	96%	195	±2.61%	93%
Q1-Q4 (Apr12-Mar13)	96%	239	±2.41%	93%
FY 08/09	100%	4	±0%	94%
FY 09/10	NA	0	NA	98%
FY 10/11	99%	103	±1.64%	97%
FY 11/12	94%	18	±10.59%	97%
FY 12/13	96%	239	±2.41%	93%





# Priority 8 Building reassurance and confidence

## Public Attitude Survey

### Q13: To what extent are you worried about crime in the area?

Base: all respondents, excluding 'don't know'

Difference from previous quarter [Borough]: ±0%

Difference from same quarter in 2011/12 [Borough]: ±0%

% worried (very/fairly)	Barnet			MPS
	%	Base	Confidence interval	%
Q1-Q4 (Apr11-Mar12)	33%	398	±4.61%	35%
Q2-Q1 (Jul11-Jun12)	31%	398	±4.53%	35%
Q3-Q2 (Oct11-Sep12)	32%	398	±4.57%	35%
Q4-Q3 (Jan12-Dec12)	33%	398	±4.63%	35%
Q1-Q4 (Apr12-Mar13)	33%	398	±4.61%	34%
FY 08/09	38%	596	±3.9%	38%
FY 09/10	19%	591	±3.19%	27%
FY 10/11	25%	626	±3.4%	30%
FY 11/12	33%	398	±4.61%	35%
FY 12/13	33%	398	±4.61%	34%

